



# SYNCHRON MACHINE TOOLS PVT LTD

# B-168, 4th Main, 2nd Stage, Peenya Industrial Area, Bangalore 560058

E-mail : [info@synchronmachinetools.in](mailto:info@synchronmachinetools.in) | Web : [www.synchronmachinetools.in](http://www.synchronmachinetools.in)

## COMPANY INFRASTRUCTURE





# SYNCHRON MACHINE TOOLS PVT LTD

# B-168, 4th Main, 2nd Stage, Peenya Industrial Area, Bangalore 560058

E-mail : [info@synchronmachinetools.in](mailto:info@synchronmachinetools.in) | Web : [www.synchronmachinetools.in](http://www.synchronmachinetools.in)

## STORE





# SYNCHRON MACHINE TOOLS PVT LTD

# B-168, 4th Main, 2nd Stage, Peenya Industrial Area, Bangalore 560058

E-mail : [info@synchronmachinetools.in](mailto:info@synchronmachinetools.in) | Web : [www.synchronmachinetools.in](http://www.synchronmachinetools.in)

## DESIGN



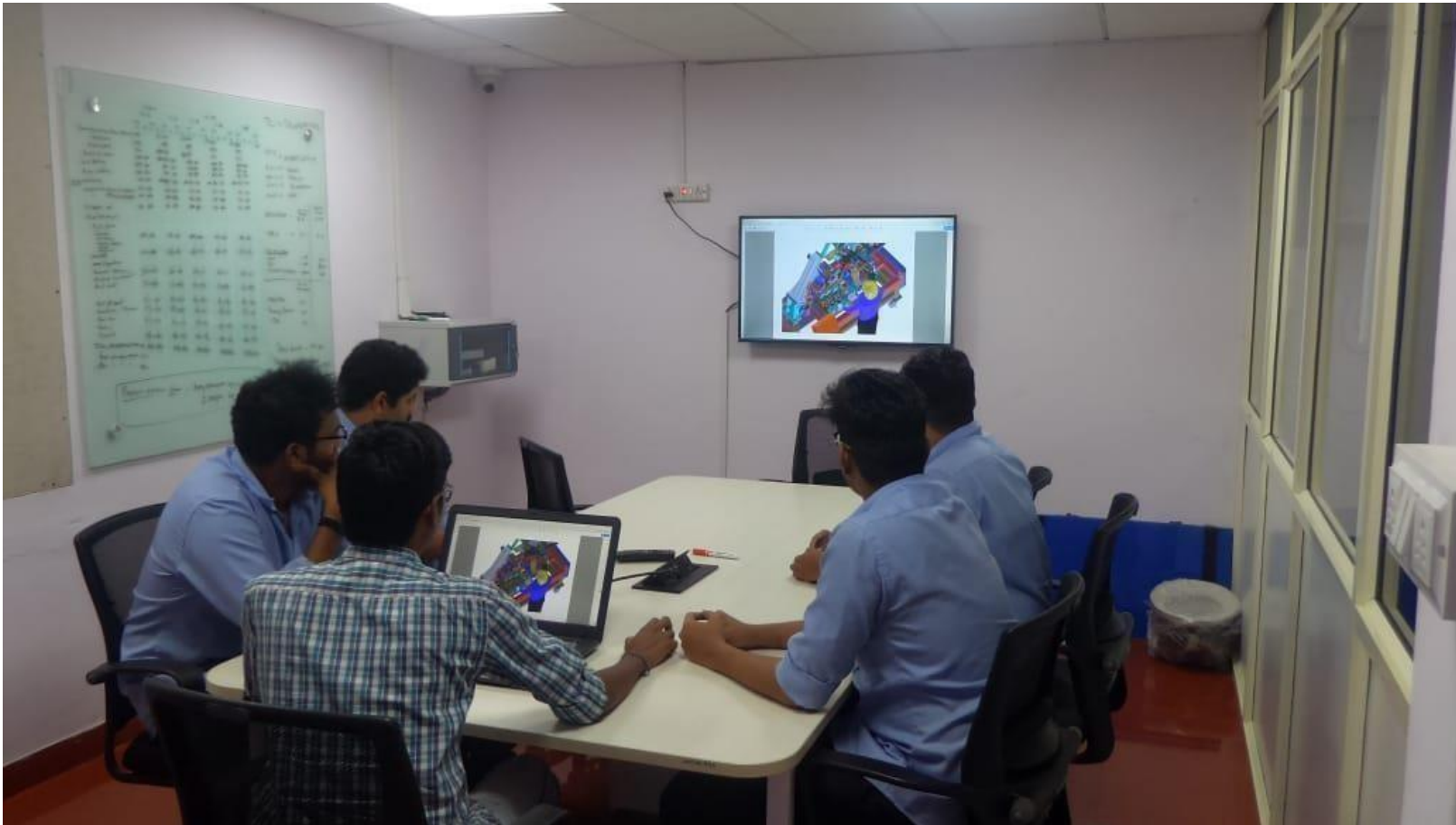


# SYNCHRON MACHINE TOOLS PVT LTD

# B-168, 4th Main, 2nd Stage, Peenya Industrial Area, Bangalore 560058

E-mail : [info@synchronmachinetools.in](mailto:info@synchronmachinetools.in) | Web : [www.synchronmachinetools.in](http://www.synchronmachinetools.in)

## CONFERENCE ROOM



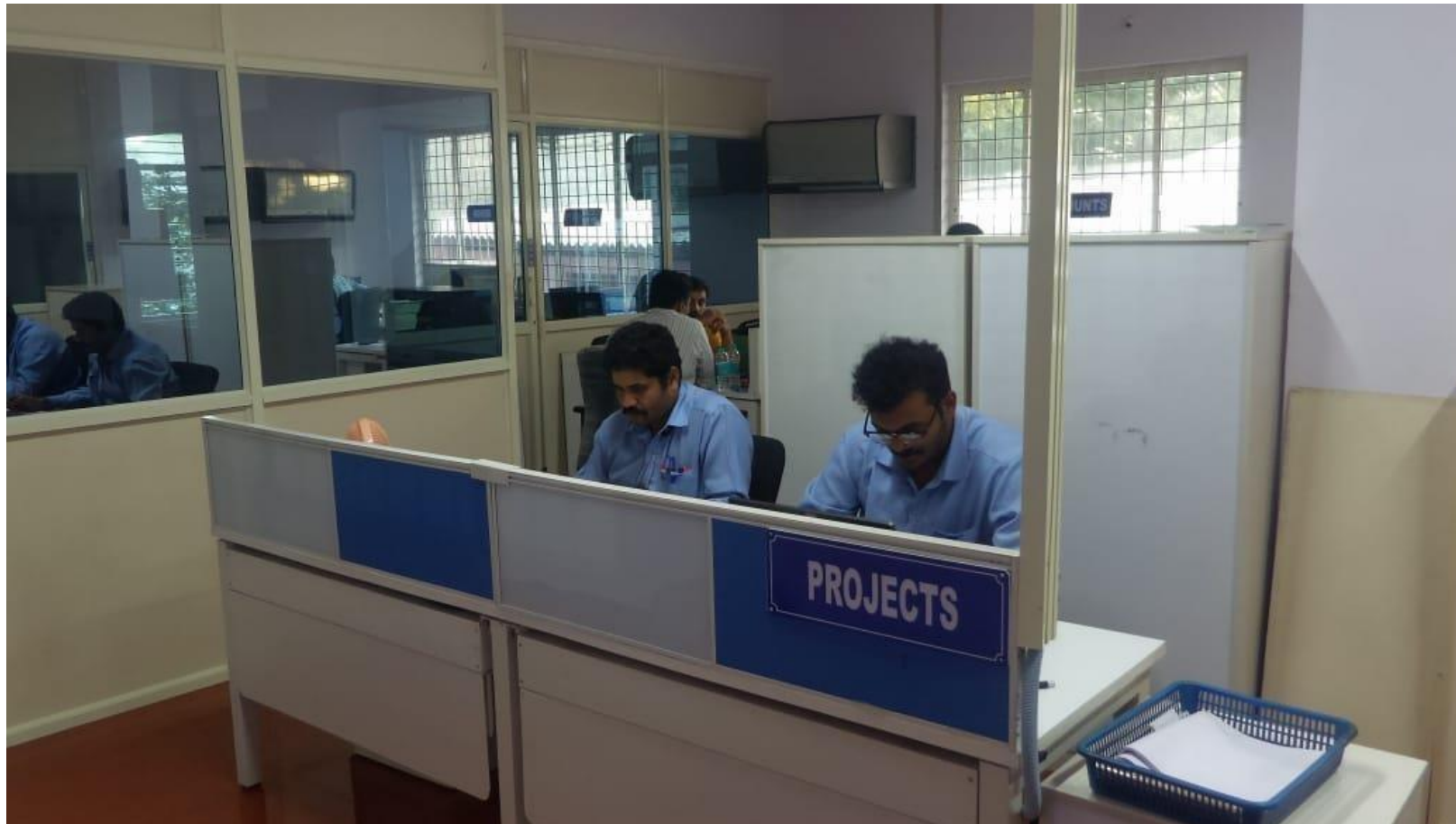


# SYNCHRON MACHINE TOOLS PVT LTD

# B-168, 4th Main, 2nd Stage, Peenya Industrial Area, Bangalore 560058

E-mail : [info@synchronmachinetools.in](mailto:info@synchronmachinetools.in) | Web : [www.synchronmachinetools.in](http://www.synchronmachinetools.in)

## PROJECTS





# SYNCHRON MACHINE TOOLS PVT LTD

# B-168, 4th Main, 2nd Stage, Peenya Industrial Area, Bangalore 560058

E-mail : [info@synchronmachinetools.in](mailto:info@synchronmachinetools.in) | Web : [www.synchronmachinetools.in](http://www.synchronmachinetools.in)

## MACHINE SHOP



# SYNCHRON MACHINE TOOLS PVT LTD

# B-168, 4th Main, 2nd Stage, Peenya Industrial Area, Bangalore 560058

E-mail : [info@synchronmachinetools.in](mailto:info@synchronmachinetools.in) | Web : [www.synchronmachinetools.in](http://www.synchronmachinetools.in)

## QUALITY CONTROL DEPARTMENT



# SYNCHRON MACHINE TOOLS PVT LTD

# B-168, 4th Main, 2nd Stage, Peenya Industrial Area, Bangalore 560058

E-mail : [info@synchronmachinetools.in](mailto:info@synchronmachinetools.in) | Web : [www.synchronmachinetools.in](http://www.synchronmachinetools.in)

## GRINDING SHOP







# SYNCHRON MACHINE TOOLS PVT LTD

# B-168, 4th Main, 2nd Stage, Peenya Industrial Area, Bangalore 560058

E-mail : [info@synchronmachinetools.in](mailto:info@synchronmachinetools.in) | Web : [www.synchronmachinetools.in](http://www.synchronmachinetools.in)

## JIG BORING SHOP





# SYNCHRON MACHINE TOOLS PVT LTD

# B-168, 4th Main, 2nd Stage, Peenya Industrial Area, Bangalore 560058

E-mail : [info@synchronmachinetools.in](mailto:info@synchronmachinetools.in) | Web : [www.synchronmachinetools.in](http://www.synchronmachinetools.in)

## JIG GRINDING MACHINE





# SYNCHRON MACHINE TOOLS PVT LTD

# B-168, 4th Main, 2nd Stage, Peenya Industrial Area, Bangalore 560058

E-mail : [info@synchronmachinetools.in](mailto:info@synchronmachinetools.in) | Web : [www.synchronmachinetools.in](http://www.synchronmachinetools.in)

## VERTICAL MACHINIG CENTRE





# SYNCHRON MACHINE TOOLS PVT LTD

# B-168, 4th Main, 2nd Stage, Peenya Industrial Area, Bangalore 560058

E-mail : [info@synchronmachinetools.in](mailto:info@synchronmachinetools.in) | Web : [www.synchronmachinetools.in](http://www.synchronmachinetools.in)

## ASSEMBLY AREA BAY 1



# SYNCHRON MACHINE TOOLS PVT LTD

# B-168, 4th Main, 2nd Stage, Peenya Industrial Area, Bangalore 560058

E-mail : [info@synchronmachinetools.in](mailto:info@synchronmachinetools.in) | Web : [www.synchronmachinetools.in](http://www.synchronmachinetools.in)

## ASSEMBLY AREA BAY2

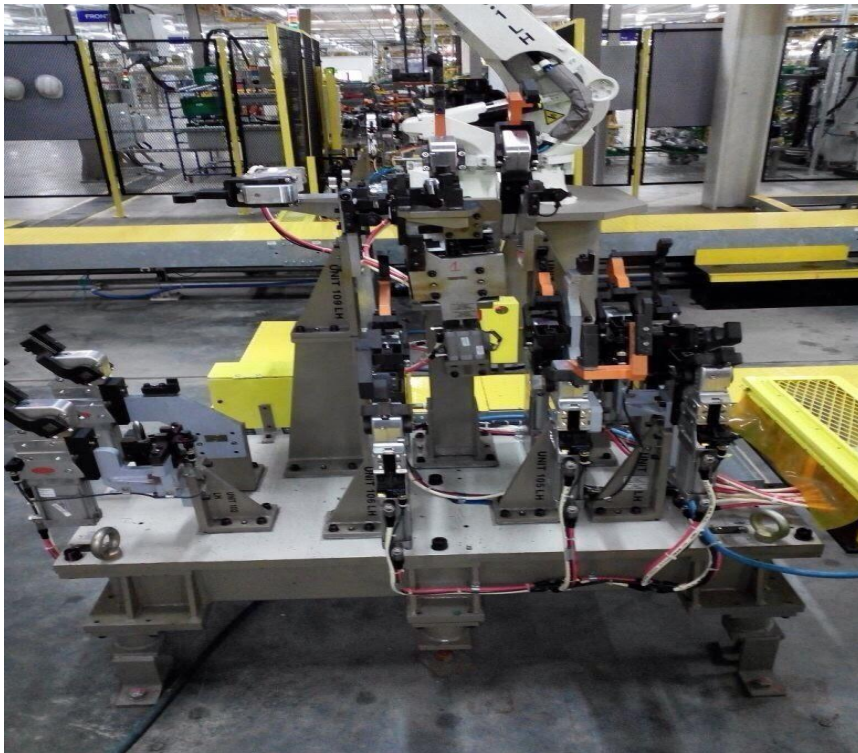


# SYNCHRON MACHINE TOOLS PVT LTD

# B-168, 4th Main, 2nd Stage, Peenya Industrial Area, Bangalore 560058

E-mail : [info@synchronmachinetools.in](mailto:info@synchronmachinetools.in) | Web : [www.synchronmachinetools.in](http://www.synchronmachinetools.in)

## ABB FORD SANAND ROBOTIC WELDING FIXTURE



**SCOPE OF WORK: DESIGN, MANUFACTURE OF WELDING FIXTURE FOR A-PILLAR & B-PILLAR FOR FORD ECO SPORT**  
**SCOPE OF WORK OF CUSTOMER: ELECTRICAL WORK AND PLC**

# SYNCHRON MACHINE TOOLS PVT LTD

# B-168, 4th Main, 2nd Stage, Peenya Industrial Area, Bangalore 560058

E-mail : [info@synchronmachinetools.in](mailto:info@synchronmachinetools.in) | Web : [www.synchronmachinetools.in](http://www.synchronmachinetools.in)

## ABB FORD SANAND ROBOTIC WELDING FIXTURE



**SCOPE OF WORK:** DESIGN, MANUFACTURE OF WELDING FIXTURE FOR CHASSIS FOR FORD ECO SPORT

**SCOPE OF WORK OF CUSTOMER:** ELECTRICAL WORK AND PLC PROGRAMMING

# SYNCHRON MACHINE TOOLS PVT LTD

# B-168, 4th Main, 2nd Stage, Peenya Industrial Area, Bangalore 560058

E-mail : [info@synchronmachinetools.in](mailto:info@synchronmachinetools.in) | Web : [www.synchronmachinetools.in](http://www.synchronmachinetools.in)

## ABB FORDSANAND



**SCOPE OF WORK:** DESIGN,  
MANUFACTURE OF WELDING FIXTURE  
FOR ROOF TOP FOR FORD ECO SPORT  
**SCOPE OF WORK OF CUSTOMER:**  
ELECTRICAL WORK AND PLC



**SCOPE OF WORK:** DESIGN, MANUFACTURE OF  
WELDING  
FIXTURE FOR DECK LID FOR FORD ECO SPORT  
**SCOPE OF WORK OF CUSTOMER:** ELECTRICAL  
WORK AND PLC PROGRAMMING



# SYNCHRON MACHINE TOOLS PVT LTD

# B-168, 4th Main, 2nd Stage, Peenya Industrial Area, Bangalore 560058

E-mail : [info@synchronmachinetools.in](mailto:info@synchronmachinetools.in) | Web : [www.synchronmachinetools.in](http://www.synchronmachinetools.in)

## ABB FORDSANAND



**SCOPE OF WORK:** DESIGN, MANUFACTURE OF WELDING FIXTURE FOR CHASSIS FOR FORD ECO SPORT

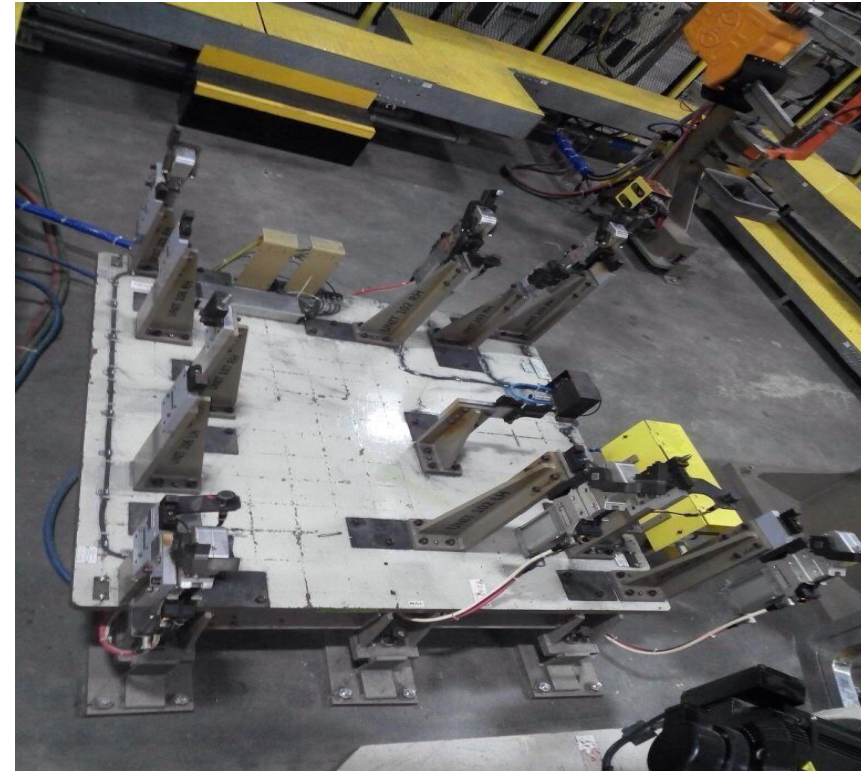
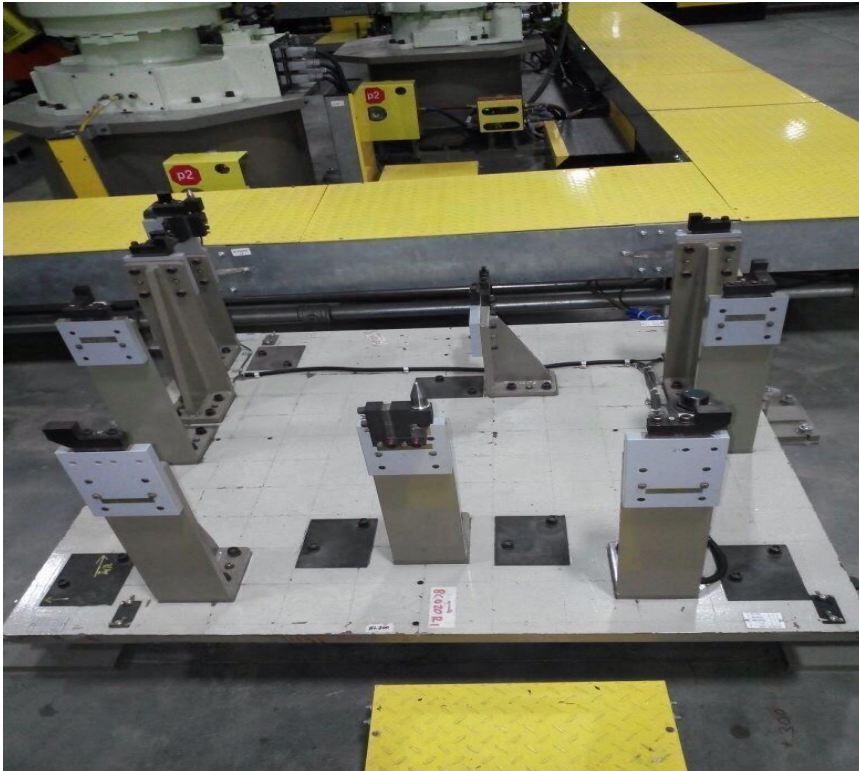
**SCOPE OF WORK OF CUSTOMER:** ELECTRICAL WORK AND PLC PROGRAMMING

# SYNCHRON MACHINE TOOLS PVT LTD

# B-168, 4th Main, 2nd Stage, Peenya Industrial Area, Bangalore 560058

E-mail : [info@synchronmachinetools.in](mailto:info@synchronmachinetools.in) | Web : [www.synchronmachinetools.in](http://www.synchronmachinetools.in)

## ABB FORD SANAND



**SCOPE OF WORK:** DESIGN, MANUFACTURE OF WELDING FIXTURE FOR REAR DOOR AND FRONT DOOR FOR FORD ECO SPORT

**SCOPE OF WORK OF CUSTOMER:** ELECTRICAL WORK AND PLC PROGRAMMING

# SYNCHRON MACHINE TOOLS PVT LTD

# B-168, 4th Main, 2nd Stage, Peenya Industrial Area, Bangalore 560058

E-mail : [info@synchronmachinetools.in](mailto:info@synchronmachinetools.in) | Web : [www.synchronmachinetools.in](http://www.synchronmachinetools.in)

## AXL MACHINING FIXTURE



**SCOPE OF WORK:** DESIGN, MANUFACTURE AND PROVE OUT OF AXLE HUB MACHINING FIXTURE

# SYNCHRON MACHINE TOOLS PVT LTD

# B-168, 4th Main, 2nd Stage, Peenya Industrial Area, Bangalore 560058

E-mail : [info@synchronmachinetools.in](mailto:info@synchronmachinetools.in) | Web : [www.synchronmachinetools.in](http://www.synchronmachinetools.in)

## CATERPILLAR FIXTURE



**SCOPE OF WORK:** MANUFACTURE AND PROVE OUT FOR ROBOTIC WELDING EXPORT FIXTURE TO TEXAS, USA. SIZE: 6M LENGTH X4M WIDTH  
WELDING FIXTURE USED FOR GEAR BOX WELDING USED FOR SHALE GAS EXTRACTION MACHINE

# SYNCHRON MACHINE TOOLS PVT LTD

# B-168, 4th Main, 2nd Stage, Peenya Industrial Area, Bangalore 560058

E-mail : [info@synchronmachinetools.in](mailto:info@synchronmachinetools.in) | Web : [www.synchronmachinetools.in](http://www.synchronmachinetools.in)

## TVS MYSORE



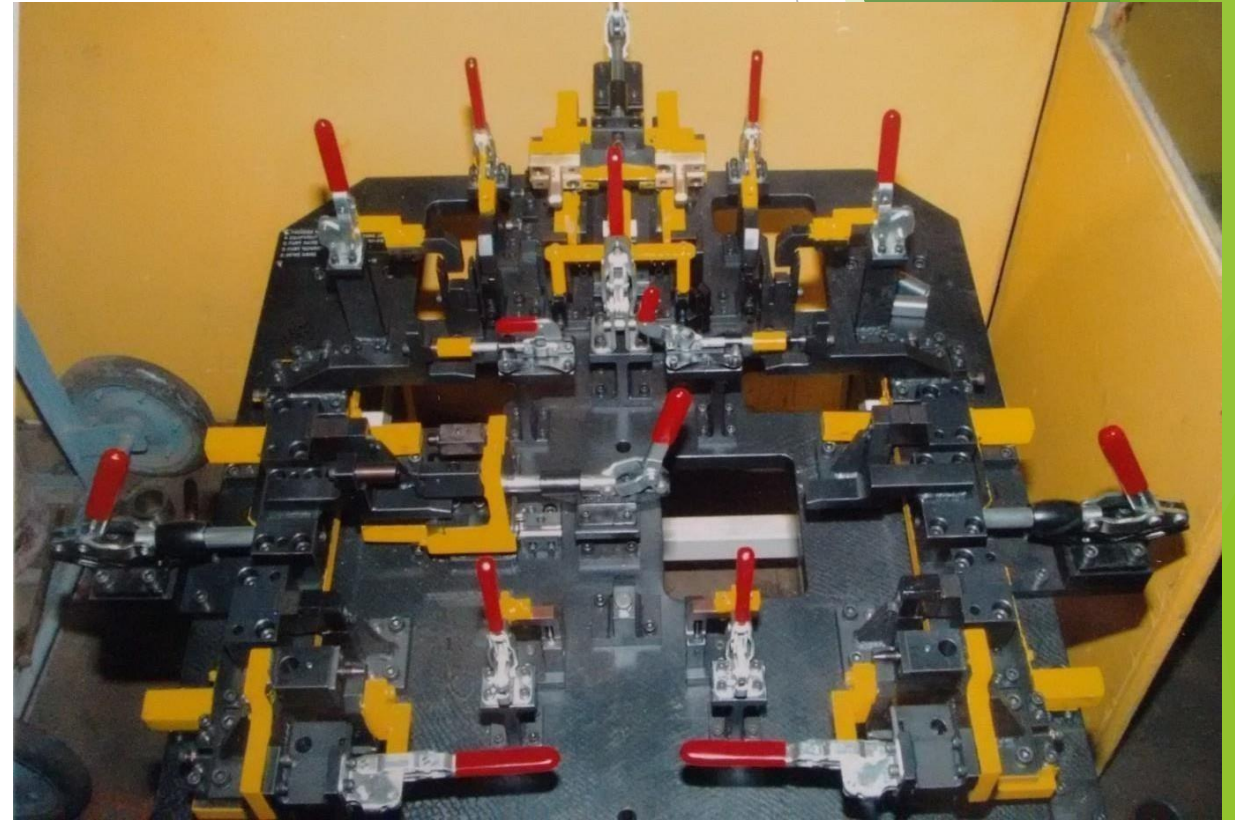
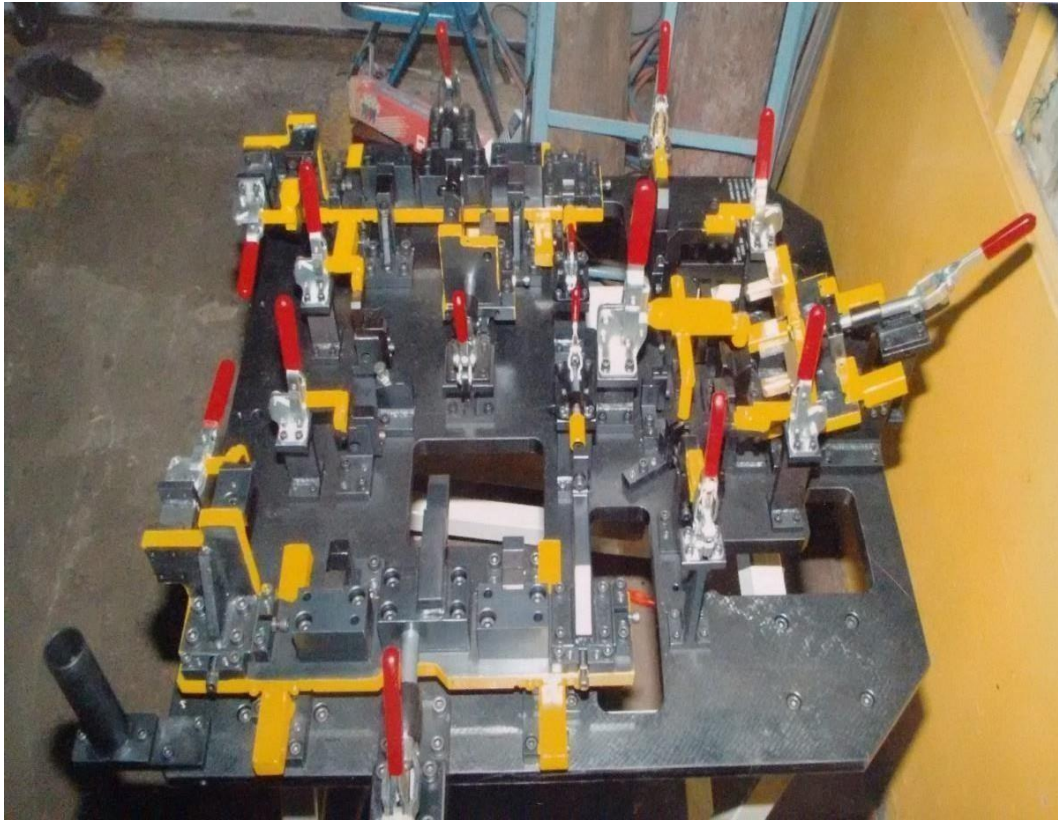
**SCOPE OF WORK:** DESIGN MANUFACTURE AND PROVE OUT OF WELDING FIXTURE FOR WELDING OF APACHE 160 RTR FRAME

# SYNCHRON MACHINE TOOLS PVT LTD

# B-168, 4th Main, 2nd Stage, Peenya Industrial Area, Bangalore 560058

E-mail : [info@synchronmachinetools.in](mailto:info@synchronmachinetools.in) | Web : [www.synchronmachinetools.in](http://www.synchronmachinetools.in)

## TVS HOSUR WELDING FIXTURE



**SCOPE OF WORK:** DESIGN MANUFACTURE AND PROVE OUT  
OF WELDING  
FIXTURE FOR WELDING OF 2 WHEELER FRAME

# SYNCHRON MACHINE TOOLS PVT LTD

# B-168, 4th Main, 2nd Stage, Peenya Industrial Area, Bangalore 560058

E-mail : [info@synchronmachinetools.in](mailto:info@synchronmachinetools.in) | Web : [www.synchronmachinetools.in](http://www.synchronmachinetools.in)

## CHECKING FIXTURE FOR TOYOTA



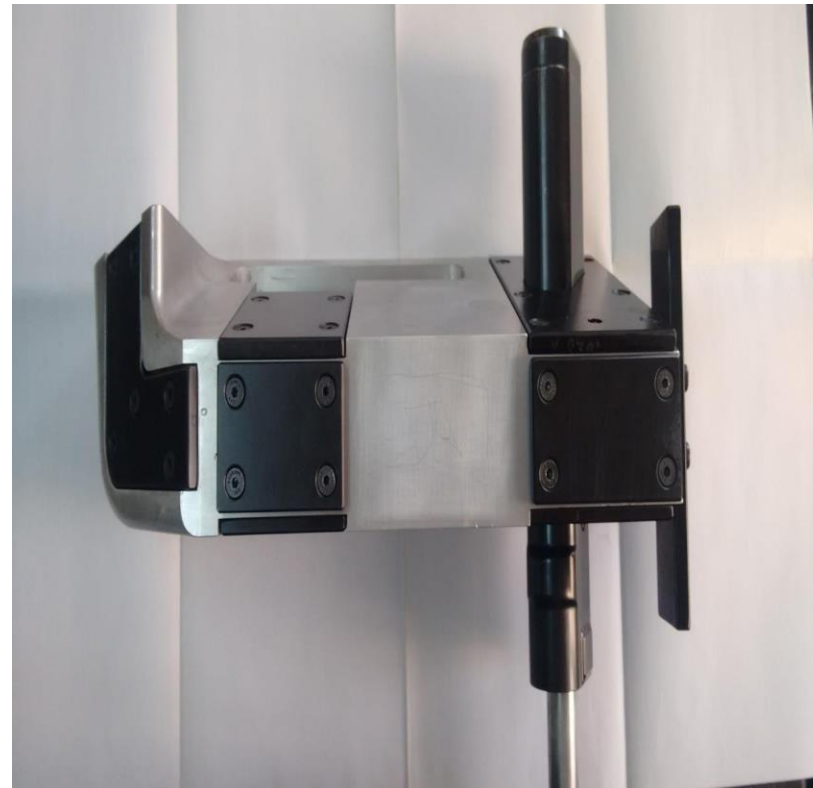
**SCOPE OF SUPPLY: DESIGN, MANUFACTURE AND PROVE OUT OF CHECKING FIXTURE FOR STYLE PART FOR TOYOTA ETIOS**

# SYNCHRON MACHINE TOOLS PVT LTD

# B-168, 4th Main, 2nd Stage, Peenya Industrial Area, Bangalore 560058

E-mail : [info@synchronmachinetools.in](mailto:info@synchronmachinetools.in) | Web : [www.synchronmachinetools.in](http://www.synchronmachinetools.in)

## CATERPILLAR GAUGES



**SCOPE OF SUPPLY: MANUFACTURE & SUPPLY OF GAUGES  
TO PEORIA,USA**



# SYNCHRON MACHINE TOOLS PVT LTD

# B-168, 4th Main, 2nd Stage, Peenya Industrial Area, Bangalore 560058

E-mail : [info@synchronmachinetools.in](mailto:info@synchronmachinetools.in) | Web : [www.synchronmachinetools.in](http://www.synchronmachinetools.in)

## CATERPILLAR GAUGES



**SCOPE OF SUPPLY: MANUFACTURE & SUPPLY OF GAUGES  
TO PEORIA,USA**

# SYNCHRON MACHINE TOOLS PVT LTD

# B-168, 4th Main, 2nd Stage, Peenya Industrial Area, Bangalore 560058

E-mail : [info@synchronmachinetools.in](mailto:info@synchronmachinetools.in) | Web : [www.synchronmachinetools.in](http://www.synchronmachinetools.in)

## CATERPILLAR GAUGES



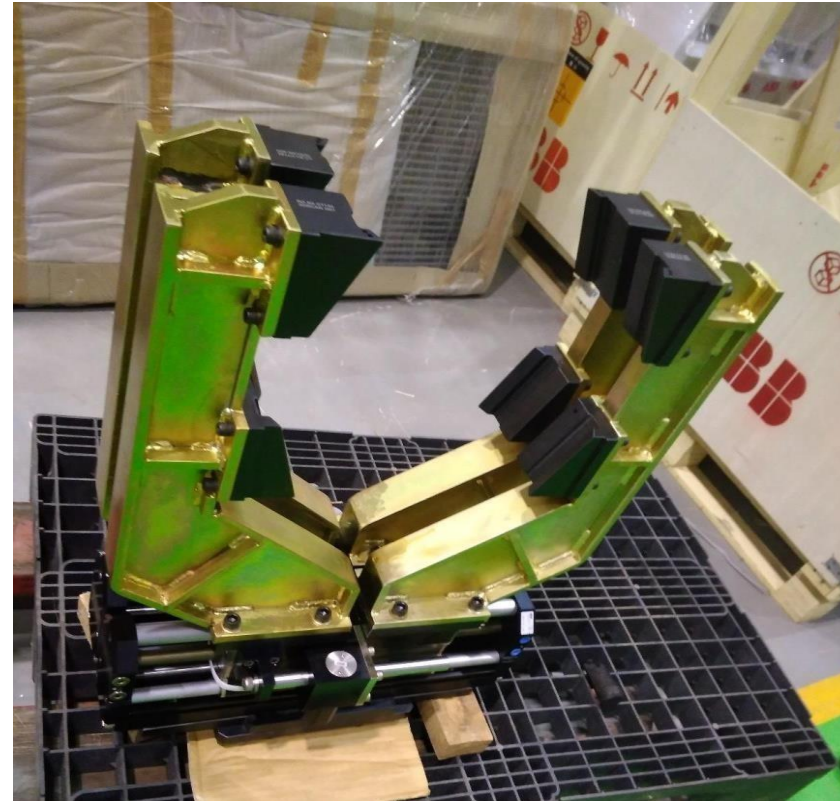
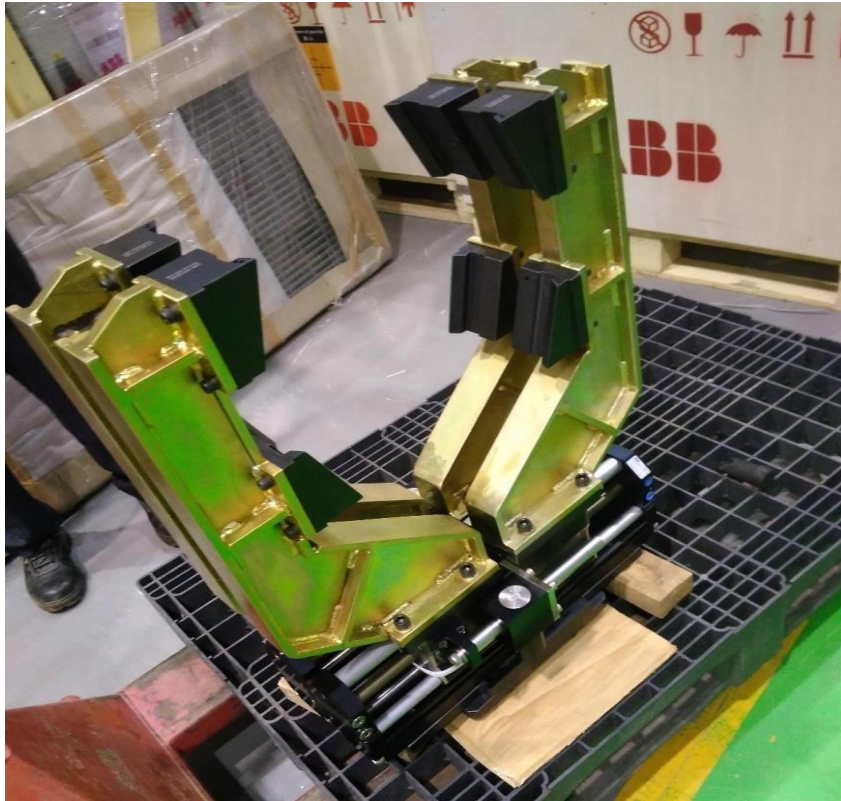
**SCOPE OF SUPPLY: MANUFACTURE & SUPPLY OF GAUGES  
TO PEORIA,USA**

# SYNCHRON MACHINE TOOLS PVT LTD

# B-168, 4th Main, 2nd Stage, Peenya Industrial Area, Bangalore 560058

E-mail : [info@synchronmachinetools.in](mailto:info@synchronmachinetools.in) | Web : [www.synchronmachinetools.in](http://www.synchronmachinetools.in)

## ABB GRIPPERS



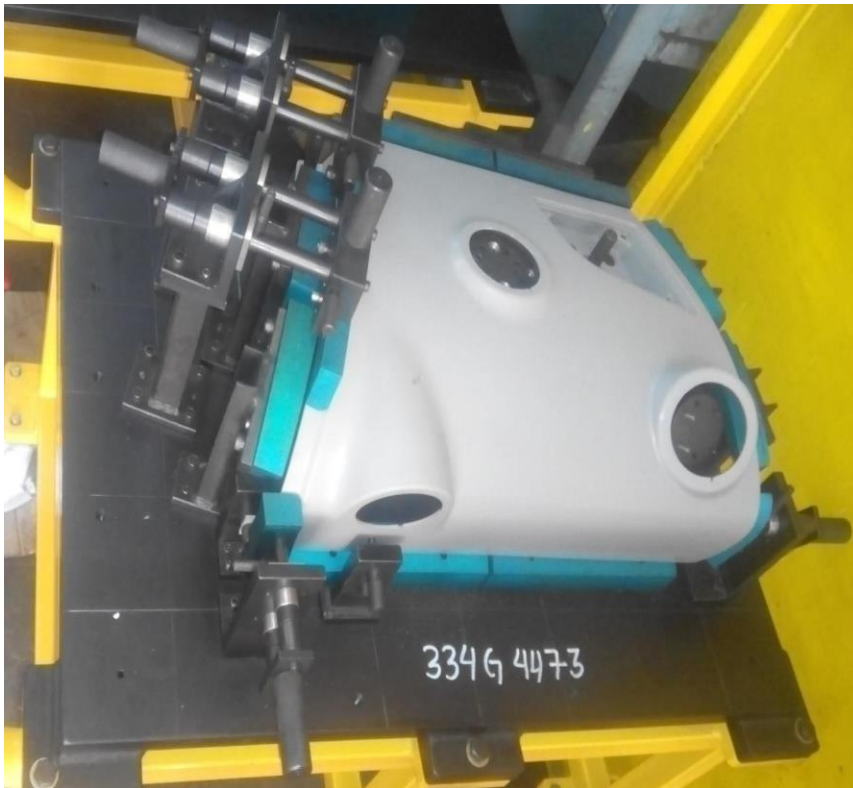
**SCOPE OF SUPPLY: DESIGN & MANUFACTURE OF ABB ROBOTIC GRIPPER FOR MATERIAL HANDLING**

# SYNCHRON MACHINE TOOLS PVT LTD

# B-168, 4th Main, 2nd Stage, Peenya Industrial Area, Bangalore 560058

E-mail : [info@synchronmachinetools.in](mailto:info@synchronmachinetools.in) | Web : [www.synchronmachinetools.in](http://www.synchronmachinetools.in)

## VENTURE FIXTURE



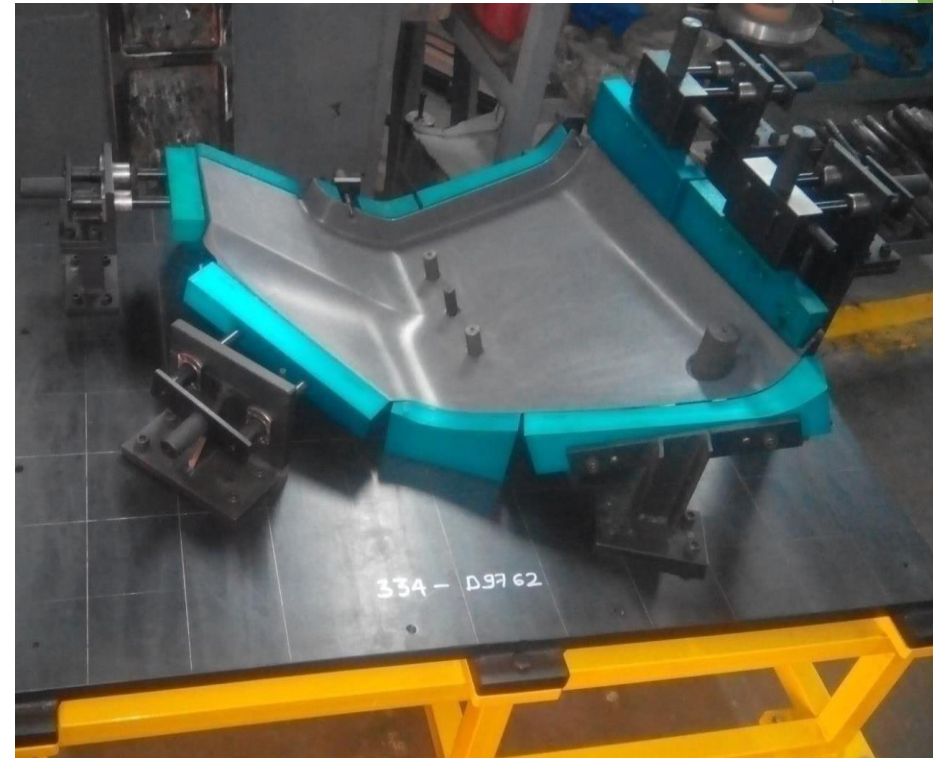
**SCOPE OF WORK:** DESIGN & MANUFACTURE OF CHECKING FIXTURE FOR DASH BOARD FRONT PANELLH FOR JCB

# SYNCHRON MACHINE TOOLS PVT LTD

# B-168, 4th Main, 2nd Stage, Peenya Industrial Area, Bangalore 560058

E-mail : [info@synchronmachinetools.in](mailto:info@synchronmachinetools.in) | Web : [www.synchronmachinetools.in](http://www.synchronmachinetools.in)

## VENTURE FIXTURE



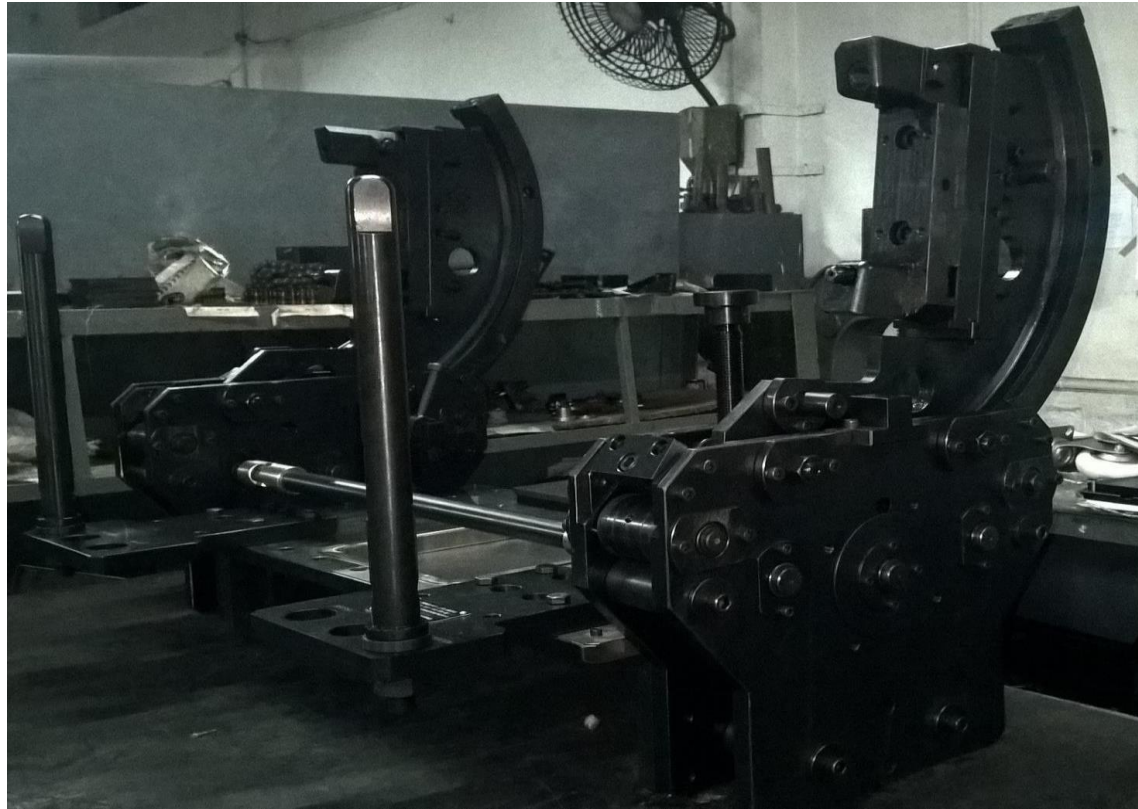
**SCOPE OF WORK:** DESIGN & MANUFACTURE OF CHECKING FIXTURE FOR DASH BOARD FRONT PANEL RH FOR JCB

# SYNCHRON MACHINE TOOLS PVT LTD

# B-168, 4th Main, 2nd Stage, Peenya Industrial Area, Bangalore 560058

E-mail : [info@synchronmachinetools.in](mailto:info@synchronmachinetools.in) | Web : [www.synchronmachinetools.in](http://www.synchronmachinetools.in)

## TATA MOTORS



**SCOPE OF WORK:** DESIGN & MANUFACTURE OF REAR AXLE ASSY  
CONVEYOR FIXTURE

# SYNCHRON MACHINE TOOLS PVT LTD

# B-168, 4th Main, 2nd Stage, Peenya Industrial Area, Bangalore 560058

E-mail : [info@synchronmachinetools.in](mailto:info@synchronmachinetools.in) | Web : [www.synchronmachinetools.in](http://www.synchronmachinetools.in)

## TATA MOTORS



**SCOPE OF SUPPLY: DESIGN & MANUFACTURE OF TML  
ASSY PALLETS**

# SYNCHRON MACHINE TOOLS PVT LTD

# B-168, 4th Main, 2nd Stage, Peenya Industrial Area, Bangalore 560058

E-mail : [info@synchronmachinetools.in](mailto:info@synchronmachinetools.in) | Web : [www.synchronmachinetools.in](http://www.synchronmachinetools.in)

## TVS APACHE ROBOTIC WELDING FIXTURE WITH CELL



**SCOPE OF SUPPLY: DESIGN & MANUFACTURE OF TVS APACHE 160 ROBOTIC WELDING  
FIXTURE WITH CELL**



# SYNCHRON MACHINE TOOLS PVT LTD

# B-168, 4th Main, 2nd Stage, Peenya Industrial Area, Bangalore 560058

E-mail : [info@synchronmachinetools.in](mailto:info@synchronmachinetools.in) | Web : [www.synchronmachinetools.in](http://www.synchronmachinetools.in)

## TVS APACHE ROBOTIC WELDING FIXTURE



**SCOPE OF SUPPLY: DESIGN & MANUFACTURING OF TVS APACHE 160 ROBOTIC WELDING  
FIXTURE WITH CELL**

# SYNCHRON MACHINE TOOLS PVT LTD

# B-168, 4th Main, 2nd Stage, Peenya Industrial Area, Bangalore 560058

E-mail : [info@synchronmachinetools.in](mailto:info@synchronmachinetools.in) | Web : [www.synchronmachinetools.in](http://www.synchronmachinetools.in)

## TVS APACHE MANUAL WELDING FIXTURE WITH CELL



**SCOPE OF SUPPLY: DESIGN & MANUFACTURING OF TVS APACHE 160 MANUAL ELECTRO PNEUMATIC WELDING FIXTURE WITH CELL**

# SYNCHRON MACHINE TOOLS PVT LTD

# B-168, 4th Main, 2nd Stage, Peenya Industrial Area, Bangalore 560058

E-mail : [info@synchronmachinetools.in](mailto:info@synchronmachinetools.in) | Web : [www.synchronmachinetools.in](http://www.synchronmachinetools.in)

## TVS APACHE MANUAL WELDING FIXTURE



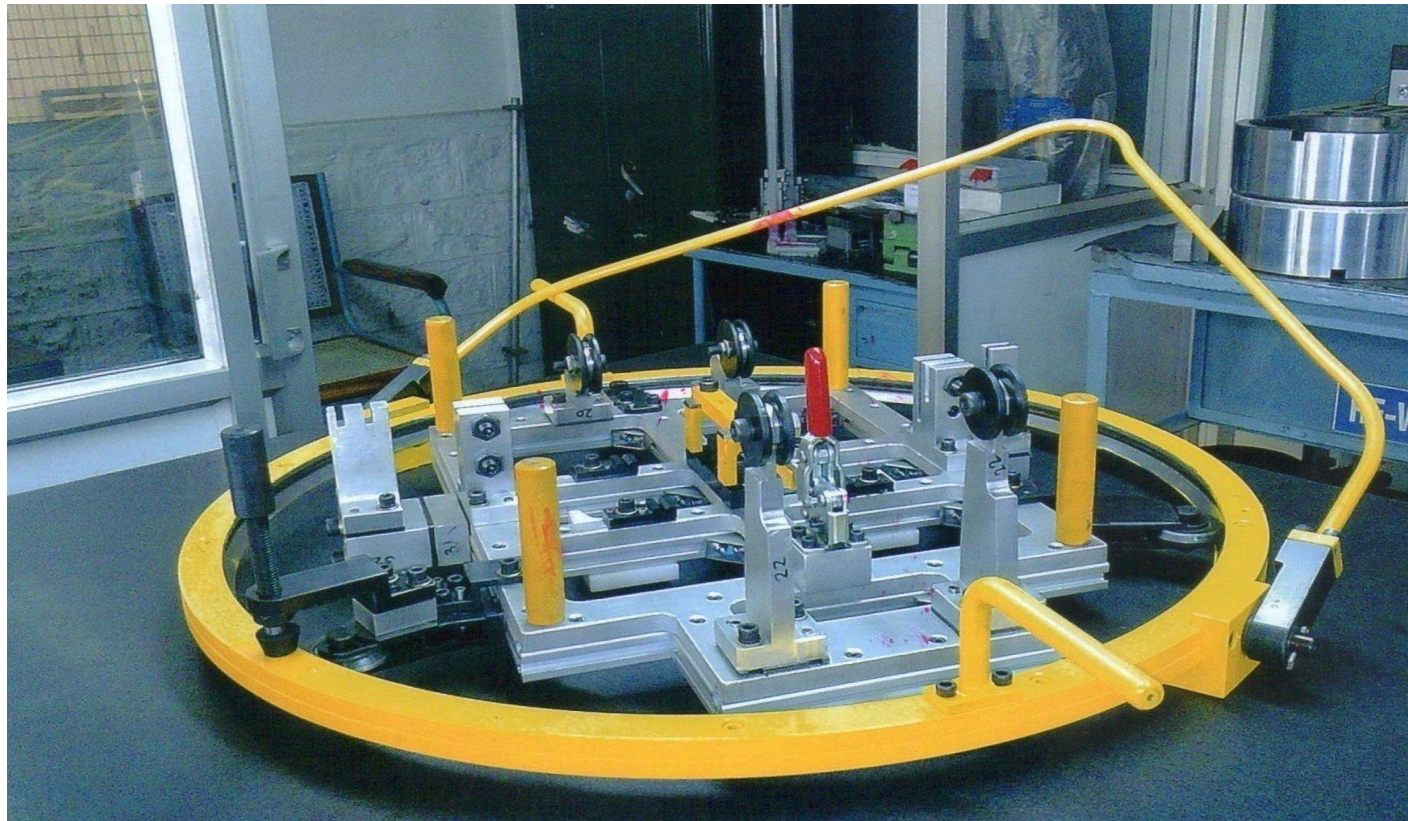
**SCOPE OF SUPPLY: DESIGN & MANUFACTURING OF TVS APACHE 160 MANUAL ELECTRO PNEUMATIC WELDING FIXTURE WITH CELL**

# SYNCHRON MACHINE TOOLS PVT LTD

# B-168, 4th Main, 2nd Stage, Peenya Industrial Area, Bangalore 560058

E-mail : [info@synchronmachinetools.in](mailto:info@synchronmachinetools.in) | Web : [www.synchronmachinetools.in](http://www.synchronmachinetools.in)

## TOYOTA BOSHOKU



**SCOPE OF SUPPLY: DESIGN & MANUFACTURE OF WELDING FIXTURE FOR HEIGHT ADJUSTMENT OF TOYOTA INNOVA SEAT.**

# SYNCHRON MACHINE TOOLS PVT LTD

# B-168, 4th Main, 2nd Stage, Peenya Industrial Area, Bangalore 560058

E-mail : [info@synchronmachinetools.in](mailto:info@synchronmachinetools.in) | Web : [www.synchronmachinetools.in](http://www.synchronmachinetools.in)

## TVS MOTOR Co. PANEL CHECKER



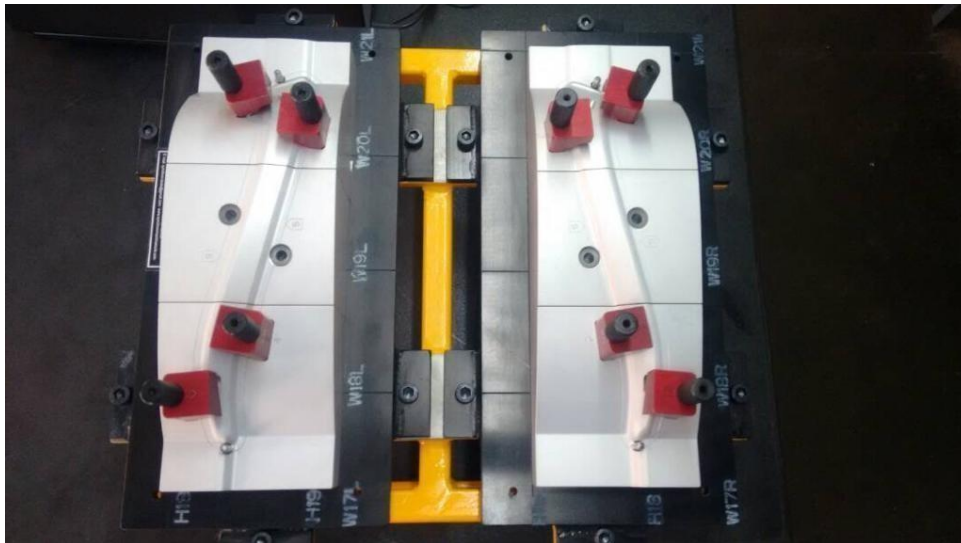
**SCOPE OF SUPPLY: DESIGN & MANUFACTURE  
PANEL CHECKER**

# SYNCHRON MACHINE TOOLS PVT LTD

# B-168, 4th Main, 2nd Stage, Peenya Industrial Area, Bangalore 560058

E-mail : [info@synchronmachinetools.in](mailto:info@synchronmachinetools.in) | Web : [www.synchronmachinetools.in](http://www.synchronmachinetools.in)

## TOYOTA CHECKING FIXTURE



**SCOPE OF SUPPLY: DESIGN & MANUFACTURE  
CHECKING FIXTURE.**

# SYNCHRON MACHINE TOOLS PVT LTD

# B-168, 4th Main, 2nd Stage, Peenya Industrial Area, Bangalore 560058

E-mail : [info@synchronmachinetools.in](mailto:info@synchronmachinetools.in) | Web : [www.synchronmachinetools.in](http://www.synchronmachinetools.in)

## SERVO BEARING PRESSES FOR CCLH & CCRH



# SYNCHRON MACHINE TOOLS PVT LTD

# B-168, 4th Main, 2nd Stage, Peenya Industrial Area, Bangalore 560058

E-mail : [info@synchronmachinetools.in](mailto:info@synchronmachinetools.in) | Web : [www.synchronmachinetools.in](http://www.synchronmachinetools.in)

## SPLIT BUSH PRESSING STATION





# SYNCHRON MACHINE TOOLS PVT LTD

# B-168, 4th Main, 2nd Stage, Peenya Industrial Area, Bangalore 560058

E-mail : [info@synchronmachinetools.in](mailto:info@synchronmachinetools.in) | Web : [www.synchronmachinetools.in](http://www.synchronmachinetools.in)

## PLUG PRESSING MACHINE





# SYNCHRON MACHINE TOOLS PVT LTD

# B-168, 4th Main, 2nd Stage, Peenya Industrial Area, Bangalore 560058

E-mail : [info@synchronmachinetools.in](mailto:info@synchronmachinetools.in) | Web : [www.synchronmachinetools.in](http://www.synchronmachinetools.in)

## PRESSING MACHINES



# SYNCHRON MACHINE TOOLS PVT LTD

# B-168, 4th Main, 2nd Stage, Peenya Industrial Area, Bangalore 560058

E-mail : [info@synchronmachinetools.in](mailto:info@synchronmachinetools.in) | Web : [www.synchronmachinetools.in](http://www.synchronmachinetools.in)

## VALVE SEAT AND VALVE GUIDE PRESSING MACHINE



# SYNCHRON MACHINE TOOLS PVT LTD

# B-168, 4th Main, 2nd Stage, Peenya Industrial Area, Bangalore 560058

E-mail : [info@synchronmachinetools.in](mailto:info@synchronmachinetools.in) | Web : [www.synchronmachinetools.in](http://www.synchronmachinetools.in)

## CAM BUSH PRESSING MACHINE



# SYNCHRON MACHINE TOOLS PVT LTD

# B-168, 4th Main, 2nd Stage, Peenya Industrial Area, Bangalore 560058

E-mail : [info@synchronmachinetools.in](mailto:info@synchronmachinetools.in) | Web : [www.synchronmachinetools.in](http://www.synchronmachinetools.in)

## BLOCK CAM BUSH PRESSING MACHINE



# SYNCHRON MACHINE TOOLS PVT LTD

# B-168, 4th Main, 2nd Stage, Peenya Industrial Area, Bangalore 560058

E-mail : [info@synchronmachinetools.in](mailto:info@synchronmachinetools.in) | Web : [www.synchronmachinetools.in](http://www.synchronmachinetools.in)

## PNEUMATIC BUSH PRESS MACHINE





# SYNCHRON MACHINE TOOLS PVT LTD

# B-168, 4th Main, 2nd Stage, Peenya Industrial Area, Bangalore 560058

E-mail : [info@synchronmachinetools.in](mailto:info@synchronmachinetools.in) | Web : [www.synchronmachinetools.in](http://www.synchronmachinetools.in)

## COVER BUSH PRESS MACHINE



# SYNCHRON MACHINE TOOLS PVT LTD

# B-168, 4th Main, 2nd Stage, Peenya Industrial Area, Bangalore 560058

E-mail : [info@synchronmachinetools.in](mailto:info@synchronmachinetools.in) | Web : [www.synchronmachinetools.in](http://www.synchronmachinetools.in)

## ACCURATE BEARING PRESSING MACHINE





# SYNCHRON MACHINE TOOLS PVT LTD

# B-168, 4th Main, 2nd Stage, Peenya Industrial Area, Bangalore 560058

E-mail : [info@synchronmachinetools.in](mailto:info@synchronmachinetools.in) | Web : [www.synchronmachinetools.in](http://www.synchronmachinetools.in)

## BALL PRESSING MACHINE

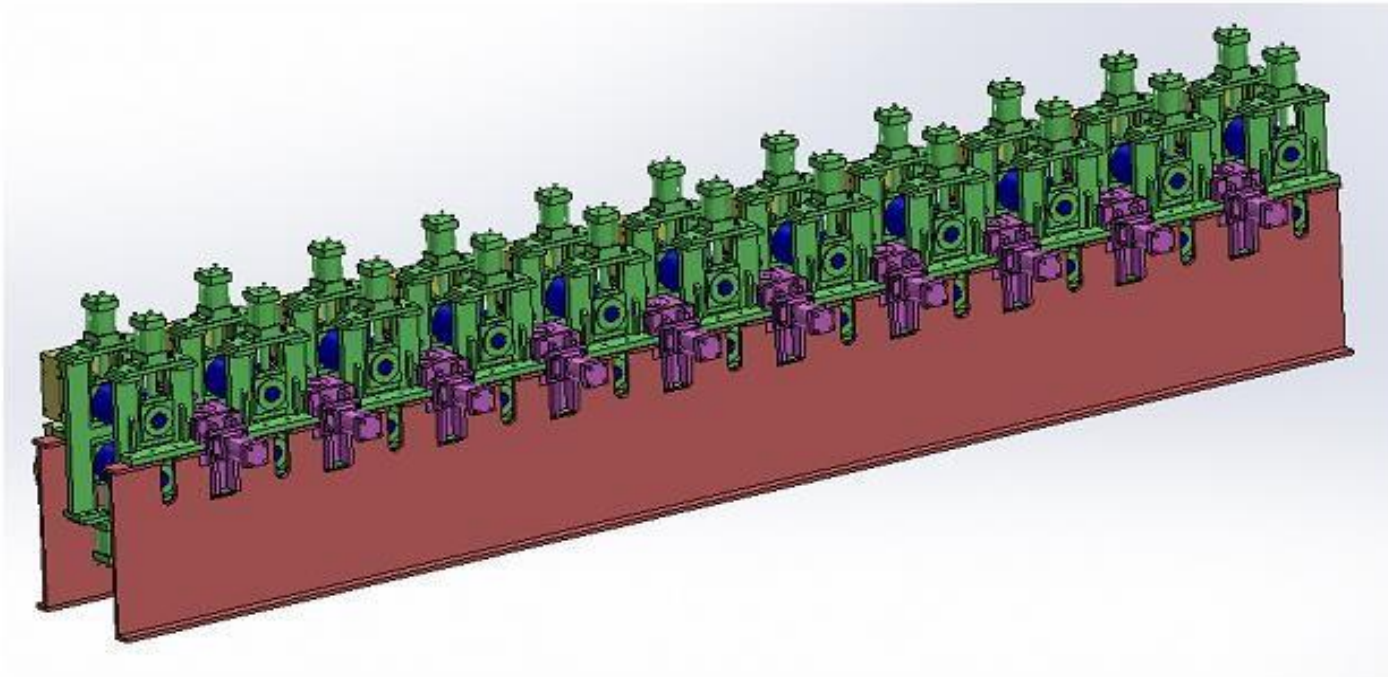


# SYNCHRON MACHINE TOOLS PVT LTD

# B-168, 4th Main, 2nd Stage, Peenya Industrial Area, Bangalore 560058

E-mail : [info@synchronmachinetools.in](mailto:info@synchronmachinetools.in) | Web : [www.synchronmachinetools.in](http://www.synchronmachinetools.in)

## ROLL FORMING MACHINE

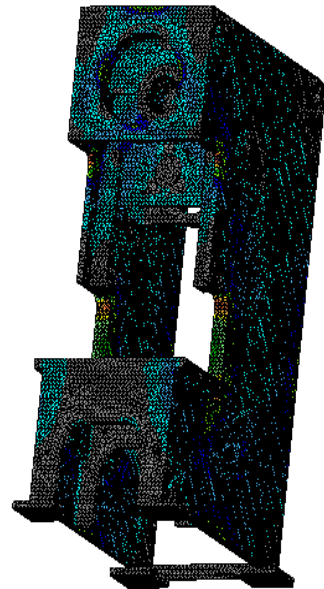


# SYNCHRON MACHINE TOOLS PVT LTD

# B-168, 4th Main, 2nd Stage, Peenya Industrial Area, Bangalore 560058

E-mail : [info@synchronmachinetools.in](mailto:info@synchronmachinetools.in) | Web : [www.synchronmachinetools.in](http://www.synchronmachinetools.in)

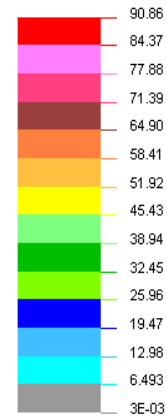
## FEM ANALYSIS OF CROSS SHAFT C-FRAME PRESS BODY



VON-MISES STRESS

VIEW : 0.0032649

RANGE: 90.85946

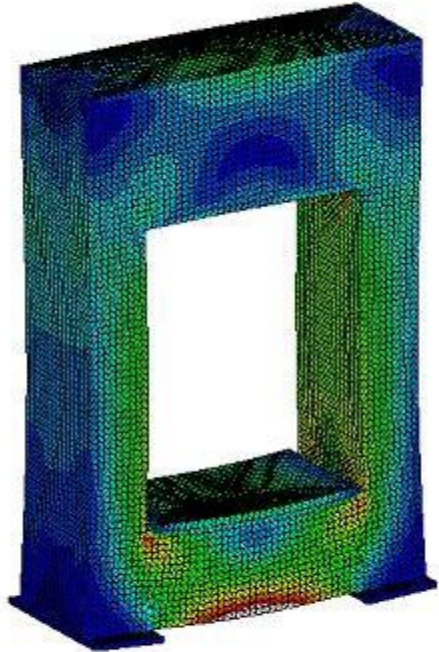


# SYNCHRON MACHINE TOOLS PVT LTD

# B-168, 4th Main, 2nd Stage, Peenya Industrial Area, Bangalore 560058

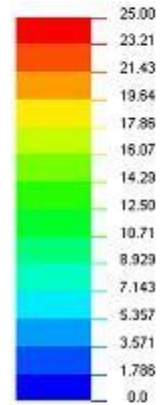
E-mail : [info@synchronmachinetools.in](mailto:info@synchronmachinetools.in) | Web : [www.synchronmachinetools.in](http://www.synchronmachinetools.in)

## FEM ANALYSIS OF 300Ton HYDRAULIC PRESS FRAME MAIN STRUCTURE



VON-MISES,STRESS

VIEW 0.0  
RANGE 92.4025

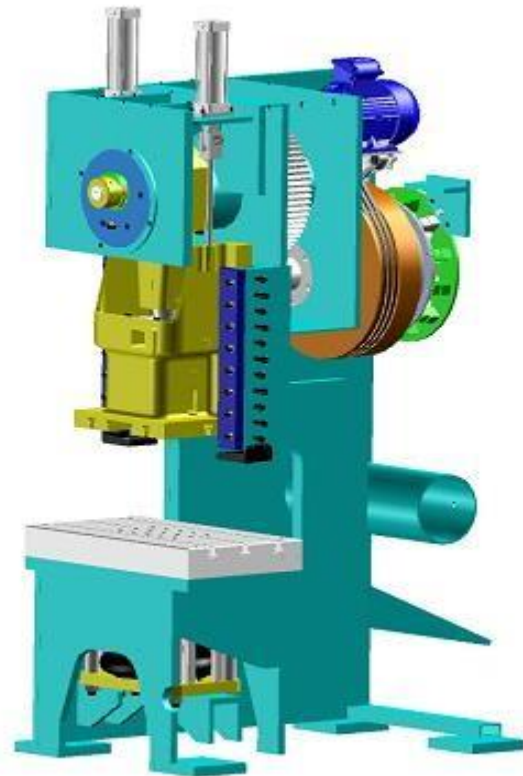


# SYNCHRON MACHINE TOOLS PVT LTD

# B-168, 4th Main, 2nd Stage, Peenya Industrial Area, Bangalore 560058

E-mail : [info@synchronmachinetools.in](mailto:info@synchronmachinetools.in) | Web : [www.synchronmachinetools.in](http://www.synchronmachinetools.in)

## C- FRAME CROSS SHAFT PRESS DESIGN – 100T

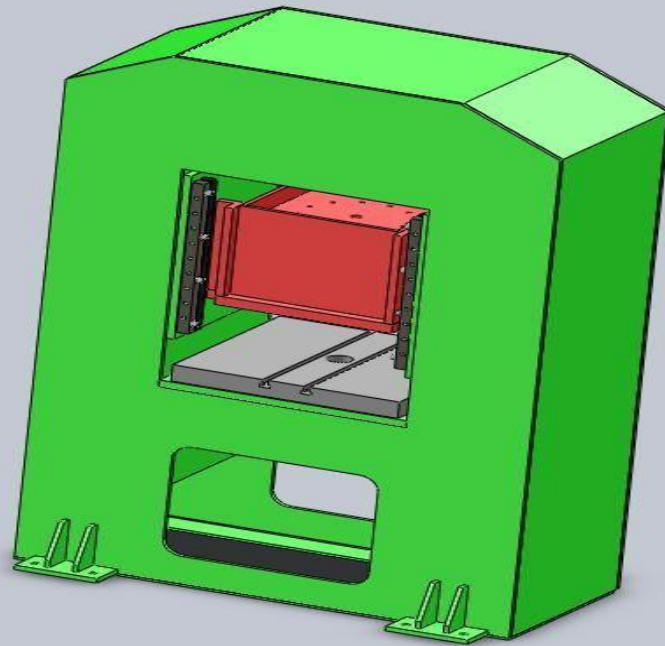


# SYNCHRON MACHINE TOOLS PVT LTD

# B-168, 4th Main, 2nd Stage, Peenya Industrial Area, Bangalore 560058

E-mail : [info@synchronmachinetools.in](mailto:info@synchronmachinetools.in) | Web : [www.synchronmachinetools.in](http://www.synchronmachinetools.in)

## 100T HYDRAULIC PRESS DESIGN

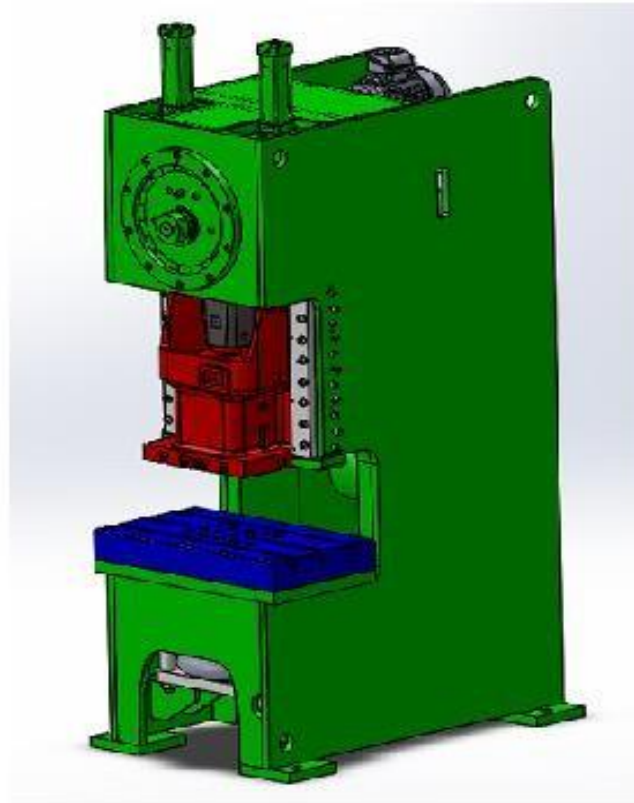


# SYNCHRON MACHINE TOOLS PVT LTD

# B-168, 4th Main, 2nd Stage, Peenya Industrial Area, Bangalore 560058

E-mail : [info@synchronmachinetools.in](mailto:info@synchronmachinetools.in) | Web : [www.synchronmachinetools.in](http://www.synchronmachinetools.in)

## C-FRAME CROSS SHAFT PRESS DESIGN – 160T

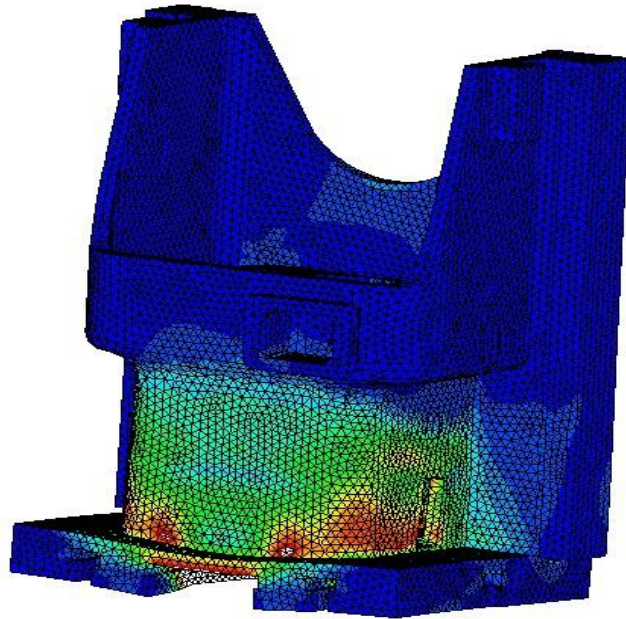


# SYNCHRON MACHINE TOOLS PVT LTD

# B-168, 4th Main, 2nd Stage, Peenya Industrial Area, Bangalore 560058

E-mail : [info@synchronmachinetools.in](mailto:info@synchronmachinetools.in) | Web : [www.synchronmachinetools.in](http://www.synchronmachinetools.in)

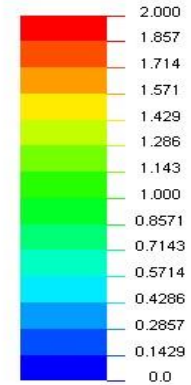
## FEM ANALYSIS OF C-FRAME MACHANICAL PRESS SLIDE



VON-MISES,STRESS

VIEW 5.443E-05

RANGE 11.32352



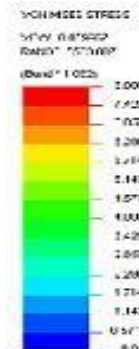
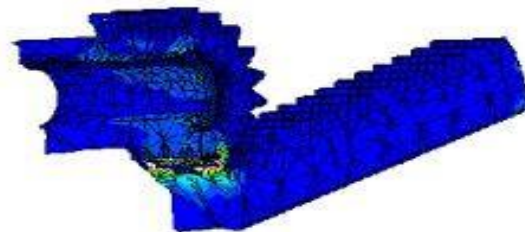
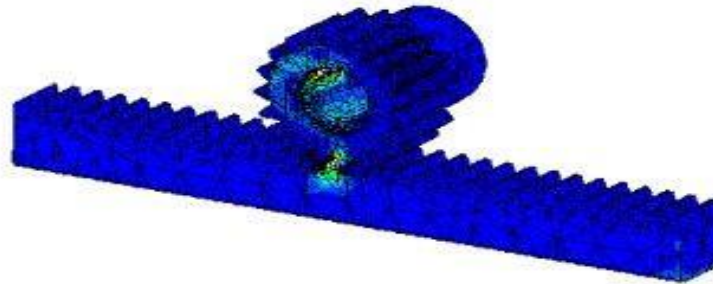
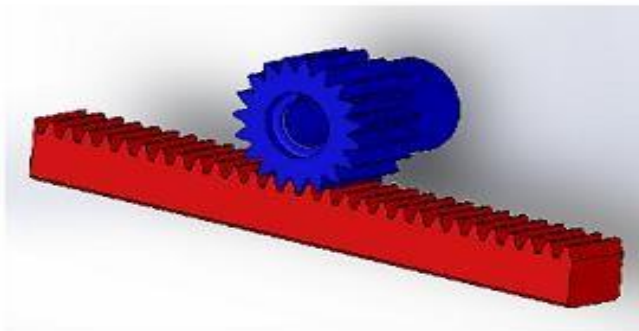


# SYNCHRON MACHINE TOOLS PVT LTD

# B-168, 4th Main, 2nd Stage, Peenya Industrial Area, Bangalore 560058

E-mail : [info@synchronmachinetools.in](mailto:info@synchronmachinetools.in) | Web : [www.synchronmachinetools.in](http://www.synchronmachinetools.in)

## FEM ANALYSIS OF RACK AND PINION FOR PULLING 20T

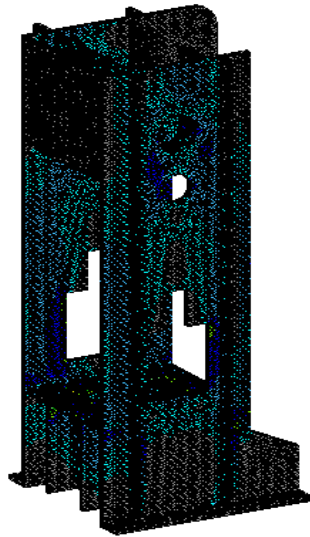


# SYNCHRON MACHINE TOOLS PVT LTD

# B-168, 4th Main, 2nd Stage, Peenya Industrial Area, Bangalore 560058

E-mail : [info@synchronmachinetools.in](mailto:info@synchronmachinetools.in) | Web : [www.synchronmachinetools.in](http://www.synchronmachinetools.in)

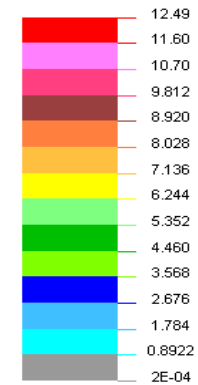
## 300T MECHANICAL PRESS STRUCTURE FEA



VON-MISES STRESS

VIEW : 0.0001969

RANGE: 12.48857



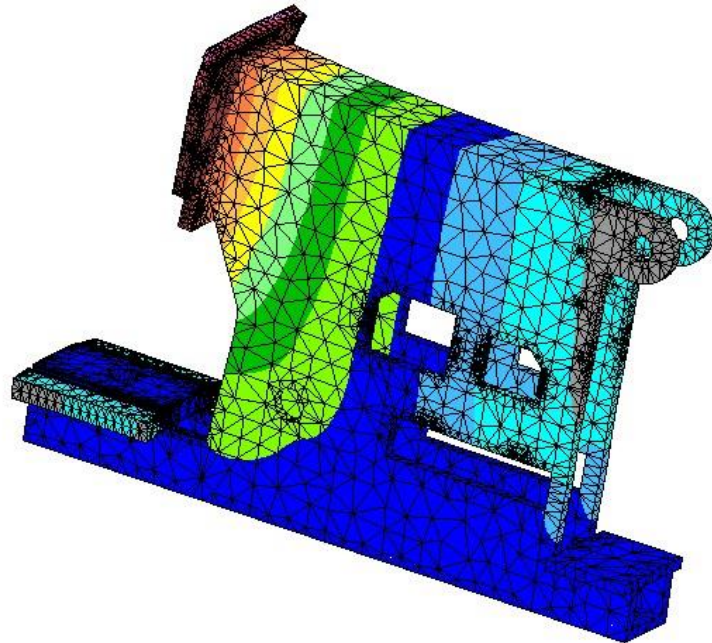
# SYNCHRON MACHINE TOOLS PVT LTD

# B-168, 4th Main, 2nd Stage, Peenya Industrial Area, Bangalore 560058

E-mail : [info@synchronmachinetools.in](mailto:info@synchronmachinetools.in) | Web : [www.synchronmachinetools.in](http://www.synchronmachinetools.in)

## IRON WORKER-50T CAPACITY FEA ANALYSIS OF STRUCTURE

DISPLAY IV - GEOMETRY MODELING SYSTEM [16.0.0] PRE/POST MODULE



Y - DISPLACEMENT

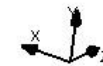
VIEW : -189673

RANGE: 0.5524302



NISA / DISPLAY

JUN/11/2011 13:54:58



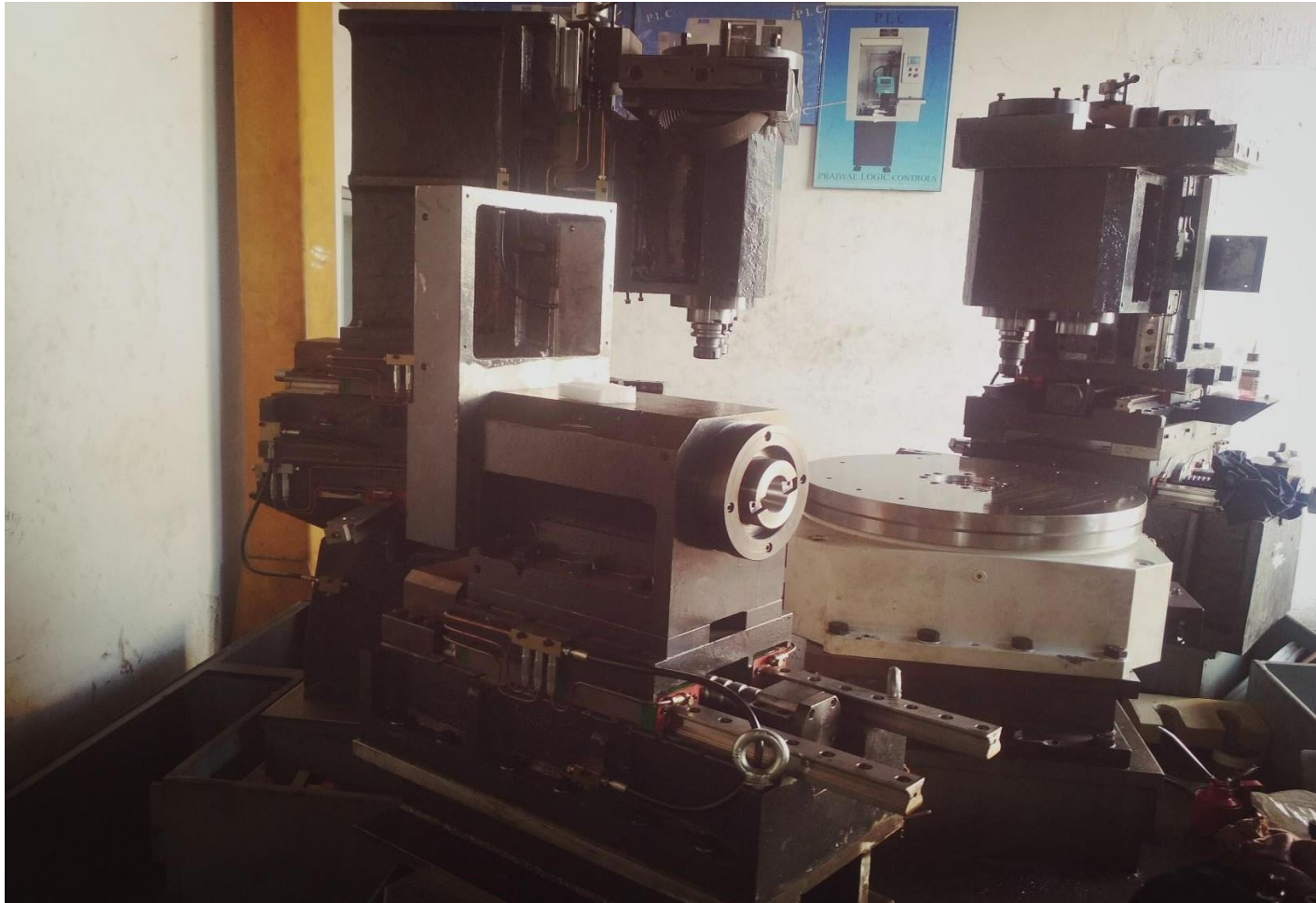


# SYNCHRON MACHINE TOOLS PVT LTD

# B-168, 4th Main, 2nd Stage, Peenya Industrial Area, Bangalore 560058

E-mail : [info@synchronmachinetools.in](mailto:info@synchronmachinetools.in) | Web : [www.synchronmachinetools.in](http://www.synchronmachinetools.in)

## Drilling & Tapping SPM



# SYNCHRON MACHINE TOOLS PVT LTD

# B-168, 4th Main, 2nd Stage, Peenya Industrial Area, Bangalore 560058

E-mail : [info@synchronmachinetools.in](mailto:info@synchronmachinetools.in) | Web : [www.synchronmachinetools.in](http://www.synchronmachinetools.in)

## Ball Screw Rod And Guide Rail System



# SYNCHRON MACHINE TOOLS PVT LTD

# B-168, 4th Main, 2nd Stage, Peenya Industrial Area, Bangalore 560058

E-mail : [info@synchronmachinetools.in](mailto:info@synchronmachinetools.in) | Web : [www.synchronmachinetools.in](http://www.synchronmachinetools.in)

## Rotary Indexing Table 4-Station



# SYNCHRON MACHINE TOOLS PVT LTD

# B-168, 4th Main, 2nd Stage, Peenya Industrial Area, Bangalore 560058

E-mail : [info@synchronmachinetools.in](mailto:info@synchronmachinetools.in) | Web : [www.synchronmachinetools.in](http://www.synchronmachinetools.in)

## Indexing table and Rotary Joint



# SYNCHRON MACHINE TOOLS PVT LTD

# B-168, 4th Main, 2nd Stage, Peenya Industrial Area, Bangalore 560058

E-mail : [info@synchronmachinetools.in](mailto:info@synchronmachinetools.in) | Web : [www.synchronmachinetools.in](http://www.synchronmachinetools.in)

## Drilling & Tapping 6 – Station SPM







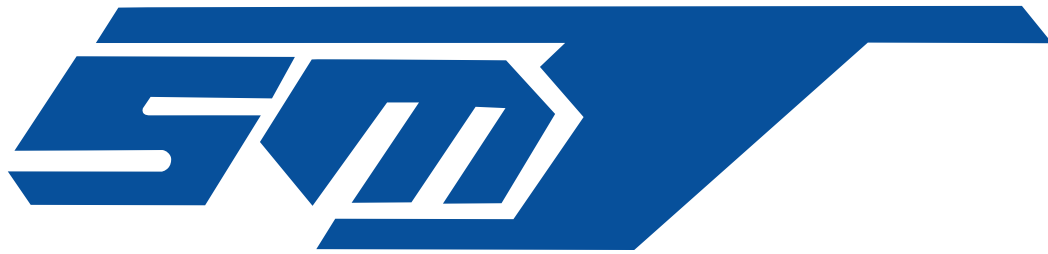
# SYNCHRON MACHINE TOOLS PVT LTD

# B-168, 4th Main, 2nd Stage, Peenya Industrial Area, Bangalore 560058  
E-mail : [info@synchronmachinetools.in](mailto:info@synchronmachinetools.in) | Web : [www.synchronmachinetools.in](http://www.synchronmachinetools.in)

## List of Customers



Thankyou



## THE MACHINE TOOL ENGINEERING COMPANY

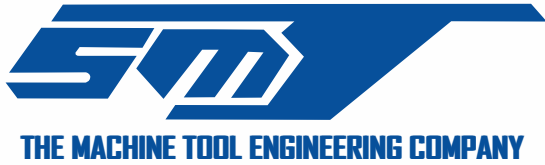


\* ASSEMBLY FIXTURES \* CHECKING FIXTURES \* MACHINING FIXTURES  
\* WELDING FIXTURES \* GAUGES \* COMPONENTS \* FABRICATIONS \* CONVEYOR SYSTEM

### **Synchron Machine Tools Pvt Ltd**

commenced operations in 1975 as a Private Limited Company. Since then, the company has managed to earn a distinction as an ISO 9001-2015 Industrial Tooling Manufacturer and Exporter.

[www.synchronmachinetools.in](http://www.synchronmachinetools.in)



# About Us

Synchron Machine Tools Pvt. Ltd. commenced its operations in 1975 as a Private Limited Concern. Since then, we have managed to earn a distinction as an ISO 9001-2015 certified company based in Bangalore, India.

We are the Manufacturers and Exporters of wide range of Industrial Equipment, Industrial Fixtures and Checking Gauges to satisfy the customer demands with right quality. The Chairman Mr. N. V. Rao and Managing Director Mr. Rohan Rao are responsible for managing all the departments and have lead the organization towards the path of success.

Mr. N.V. Rao – Chairman – Synchron Machine Tools Pvt. Ltd. has over 40 Years of experience in the manufacturing of precision toolings.

Mr. Rohan Rao – Managing Director – Synchron Machine Tools Pvt. Ltd. has over 15 Years of experience in the manufacturing of precision tooling.

With the design , manufacturing background and the support of 45 employees, we would like to associate ourselves in developing concepts, designing, detailing of equipments and manufacturing of the same.

## MISSION :

- To attain Quality Leadership in the field by not just standing for 'Adequacy' but 'Exactitude',
- To strictly comply with customer's specifications,
- To market highly reliable products at Low initial price for clients with voluminous and high-tech requirements,
- To build the confidence of customers by using the best techniques & materials and providing timely deliveries so as to achieve maximum customer satisfaction.

## TEAM :

We have an experienced team of professionals which is headed by the Managing Director Mr. Rohan Rao. The team comprises expert Supervisors, Welders, Machinists, Tool & Die Makers, Fitters, Quality Control Personnel, Engineers and Managers working with total commitment towards attaining the company's mission.

## ASSEMBLY FIXTURES

Synchron Machine Tools have designed and produced a number of jigs and fixtures for several applications across a number of industrial sectors including the automotive, automotive plastics, welding and aerospace industries.

The abilities of our in-house jig and tool design facilities enable simple jigs and more complex fixtures to be designed to suit the customers requirements. Laser cut tooling is commonly used as this allows complex shapes to be cut to match customer design information.

Jigs and Fixtures along with specific tooling form a critical element of machinery designed and supplied by us and it is this experience which is used to supply standalone jigs and fixtures to our customers when required. The examples of checking jigs and assembly fixtures shown here vary from a large fixture for measuring and checking a casting for the aerospace industry to a small cost effective checking jig to hold an automotive plastic bumper during the manual polishing process.



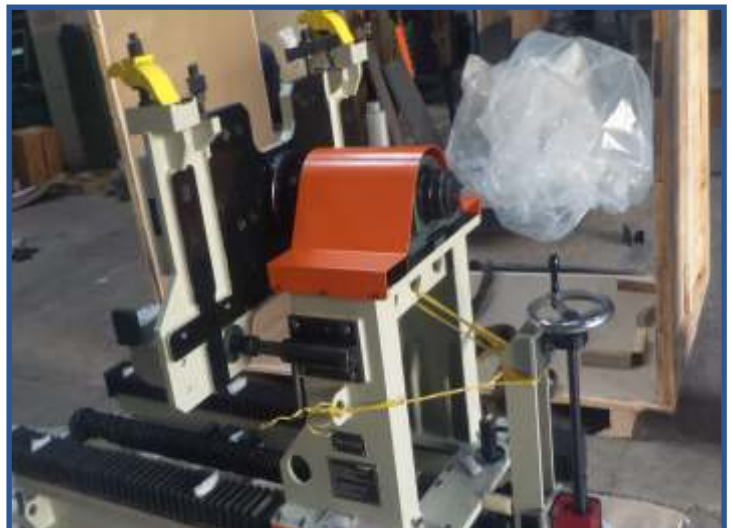
**Assembly Fixture For  
Hub Of Axle For Tata Motors**



**Change Over Conveyor  
Fixture For Tata Motors**



**Lifting & Sliding Mechanism For  
Assembly Of Caterpillar Gear Box**



**Assembly Fixture For Cat San  
Antonio , Texas**

## CHECKING FIXTURES

All checking fixtures are designed for accuracy, repeatability and reliability with a strong focus on operator ergonomics. Synchron Machine Tools offers assembly and checking fixtures for vehicle frames and body sub-assemblies, single component fixtures.



Checking fixture for Speedometer Console ,TVS Scooter



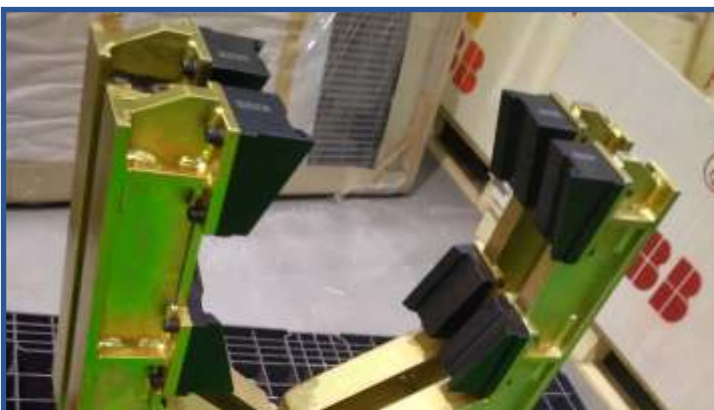
Checking fixture for side view mirror cover ,Toyota Etios



Checking fixture for Front panel , Toyota Etios



Checking fixture for Dashboard front panel , JCB



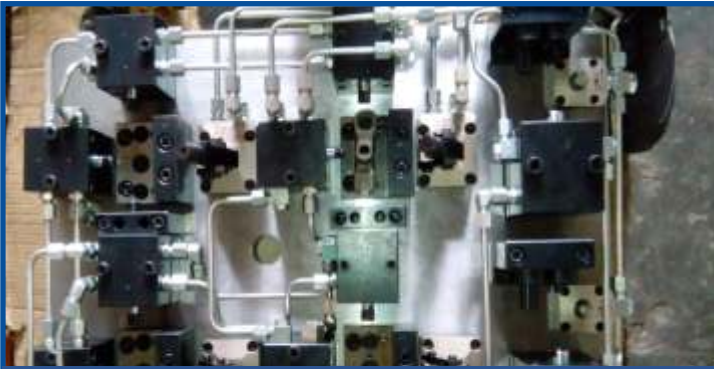
Gripper for pick and place parts , ABB Robotics



Checking fixture for Floor bound panel , TVS Scooter

## MACHINING FIXTURE

Synchron Machine Tools has a built-in reputation for supplying precision machined components and parts both economically and efficiently. With our installed capacity, we are able to offer prototype, small batch work to large production runs of precision machined components and parts. We are experienced in machining a variety of materials which includes Stainless Steel, Monel, Inconel, Titanium, Mild Steel, Aluminium Alloys, Brass, Copper, Bronze, Nylon, Peek, Delrin & others. We are specialized in fabrication and heavy machining of various steels and we offer innovative solutions for a variety of small to large size fabrication and machining applications.



**Machining fixture for Housing , WIDMA**



**Machining fixture for Streparava**



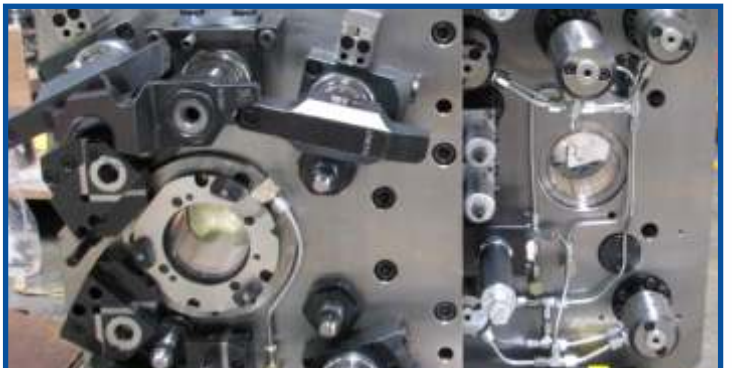
**Machining fixture for AVTEC**



**Machining fixture for Automobile Axles**



**Machining fixture for TML**



**Machining fixture for WIDMA**

## WELDING FIXTURES

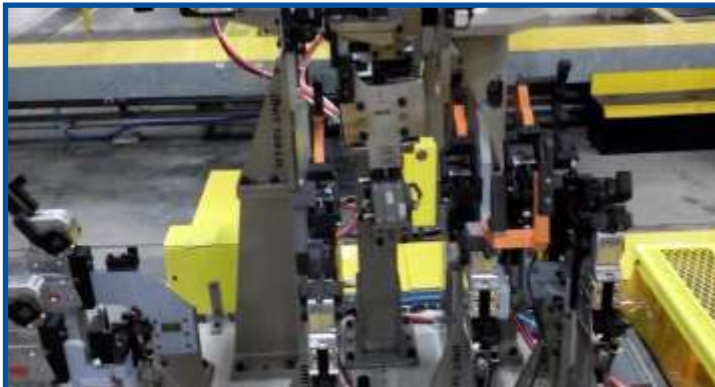
We extend our expertise in design and manufacture of sheet metal welding fixtures catering to the requirements of our customers with the help of sophisticated CAD and Simulation tools .During design a feasibility study is carried out to validate gun approach, line layout and weld study.



**Robotic welding cell station**



**Electro pneumatic Welding cell station**



**Welding fixture of Side door for Ford Sanand**



**Electro pneumatic welding fixture for Upper tube ,TVS**



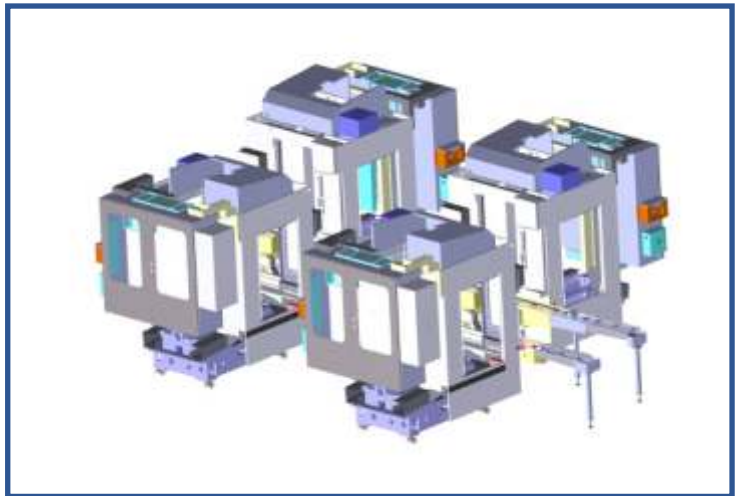
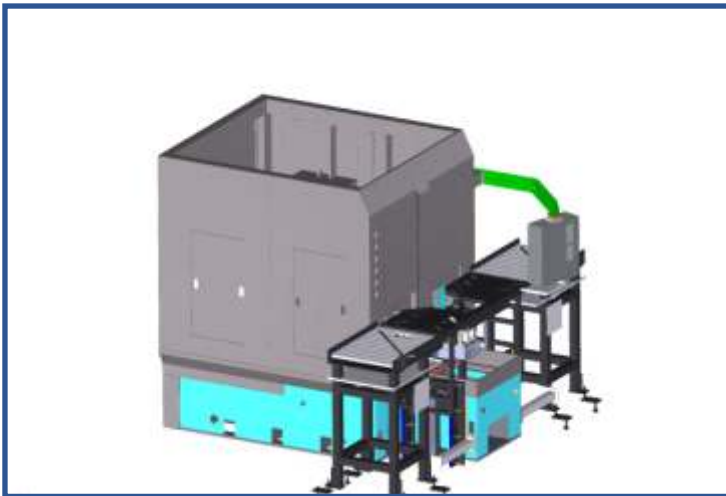
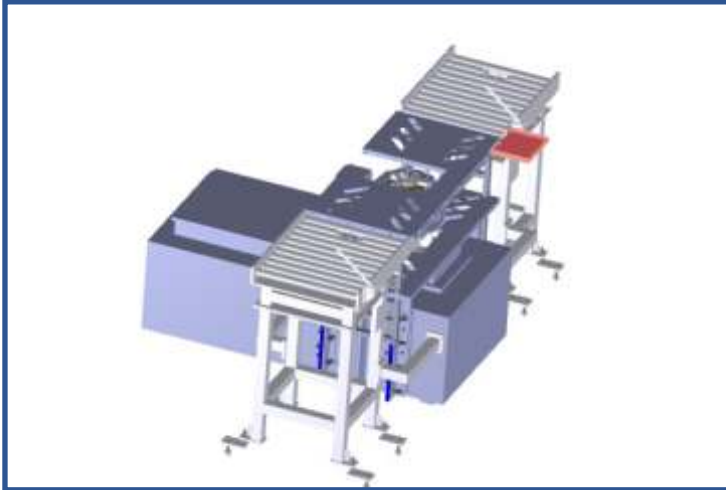
**Robotic welding fixture for 2 Wheeler Frame**



**Electro pneumatic welding fixture for Side Tube ,TVS**

## CONVEYOR SYSTEM

Synchron has also forayed into the manufacture of conveyor systems having a wealth of experience in catering to OEM's needs of various tooling's. We understand industrial material handling from design, conception, installation and offer a wide variety of Pre-Designed or Pre-Engineered products that can be easily implemented into your existing system. You get exactly what you need to keep your products moving. With us you get SERVICE, DURABLITY, DEPENDABILITY, LOW MAINTAINENCE & PROFESSIONALISM.





## GAUGES

Synchron Machine Tools provides a wide variety of dimensional gauging from Surface Checks to Flush and Gap to Hole Location & Synchron Machine Tools has the right tool for your application. Our experienced engineering department design and manufacture special gauges to suit unique applications. We are a low cost professional designer and manufacturer of Special Gauges like Receiver Gauges, Relation Gauges, Hole Position Checking Gauges, Angle Checking Gauges, Flush Pin Gauges & Indicative Special Gauges like Run-out Checking Gauges, Chamfer Depth Checking Gauges, Depth Gauges, Concentricity Checking Gauges, Connecting Rod Checking Gauges, Camshaft Checking Gauges, Multi Gauging, Plug Gauge, Snap Gauge, Ring Gauge, Width Gauge, Groove Width Checking Gauge.



**Total acceptance Gauge for motorcycle frame , TVS Motor Company**



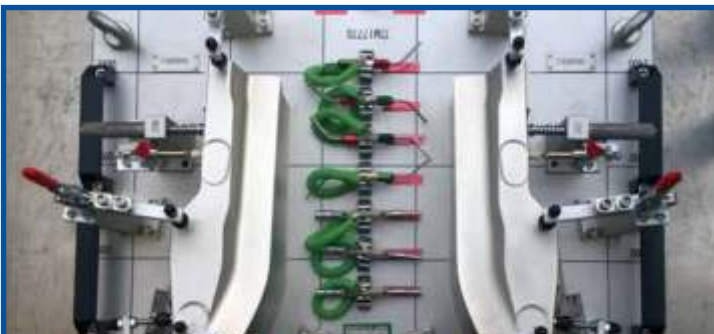
**Gauge for part checking ,Toyota Gosei**



**Gauge for part checking ,Deleks,Italy**



**Gauge for CAT,Peoria**



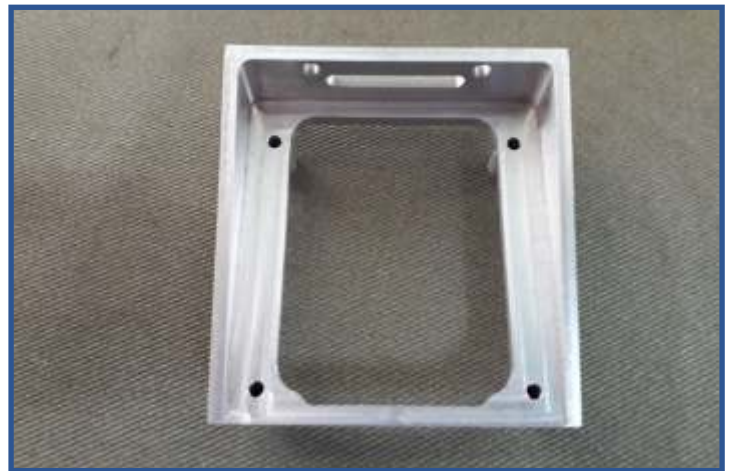
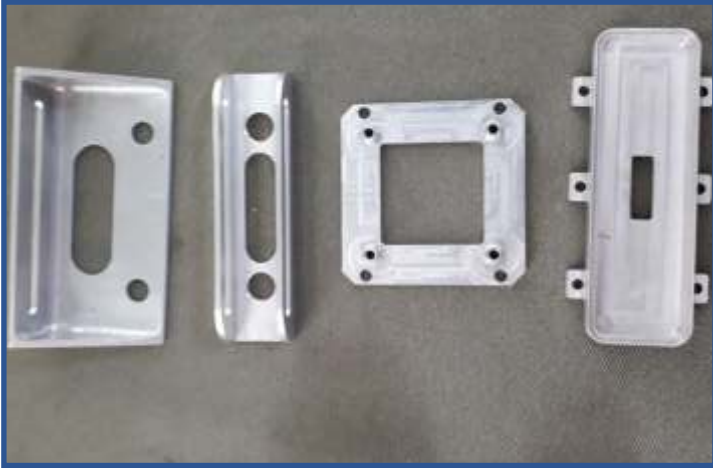
**Gauge for part checking ,Deleks,Italy**



**Gauge for part checking ,TATA Motor**

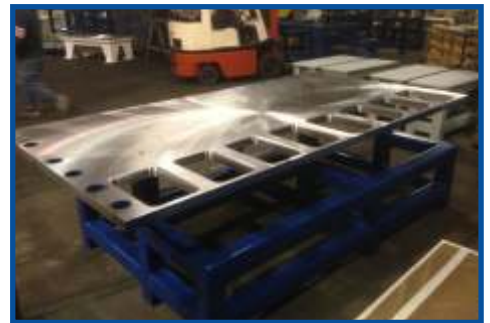
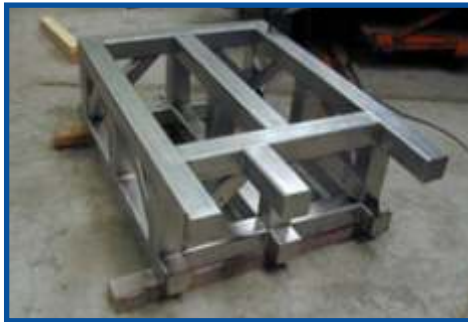
## COMPONENTS

We at SMT continuously strive to manufacture parts for a wide variety of markets and applications such as robotics, automotive, medical device, defense and renewable energy. Synchron provides value engineering, precision machining assembly of sub-assemblies and reverse engineering individually or in combinations to quickly deliver precision parts at competitive price. From Prototypes and low quantity to High volume production jobs, Synchron has the capacity to perform multiple turning and milling operations in a single seamless process.



## FABRICATIONS

Synchron is well known in the industry as a structural steel fabricator that consistently meets its internal requirements in fixture manufacturing as well as other clients requirements. We have a dedicated team of Designers and Fabricators to design and manufacture parts and Sub-Assemblies up to 10 Tones in weight. We have designed and constructed aircraft ground support maintenance platform to exhaust casings used in steam turbines which requires high safety standards and protocols to be followed. Our current contracts include design, construction, installation of fabricated assemblies and standalone parts at customer end.



## TOOLS / MACHINERY ACCESSORIES AVAILABLE

**Haas VF2 YT vertical machining centre:**

Travel: X : 762 mm, Y : 408 mm, Z : 508 mm

**CNC Jig Boring SIP-HAUSER MP-54:**

Travel: 850mm X 600mm

**CNC Jig Grinding MOORGE-G-18 1000:**

Travel: 400mm X 200mm

**WOTAN Horizontal Boring Machine :**

Spindle Size : 125 with 3 Axis DRO

Table Size : 2000mm x 1750mm

**WMW - Union Jig Boring Machine :**

Table Size : 750mm x 500mm

Spindle Size : 125 with 3 Axis DRO

**KOLB – JIG BORING DOUBLE COLUMN M/C :**

Travel: X : 2000 mm, Y : 1300 mm, Z : 1000 mm

Wotan Horizontal boring machine spindle dia 130mm with table size 2metre x 2 metre:

Travel: X : 2000 mm, Y : 1700 mm, Z : 1800 mm

**Jackobsen Surface Grinding Machine :**

Table Size : 800 x 400mm (Danish Make)

**Precision Universal Cylindrical Grinding Machine :**

GCU – 200 x 500S (PARISHUDH)

Praga Surface Grinding Machine 540 AP

**BFW Universal Milling Machine – Uf2 :**

Table Size : 350 x 315

**BFW Horizontal Milling Machine - Hf2 :**

Table Size : 1350 x 300

**BFW Horizontal Milling with Vertical Attachment type VF2 (1350 x 315)**

**HMT Radial Drilling Machine RM 61**

**HMT Radial Drilling Machine RM 63**

**HMT Tool & Cutter Grinder GTC 28**

**Turn Master 35 (Kirloskar) (800mm ABC)**

**Power Hacksaw**

**Air-cooled Welding Transformer Model PRS300**

**Hardness Checking Machine**

**Pedestal Grinding & Other hand tools**

**Pug Cutting Machine**

**MIG Welding machine 300 Amps**

**MIG Welding machine 600 Amps**





**THE MACHINE TOOL ENGINEERING COMPANY**

-  B-168,4th Main,2nd Stage Peenya  
Industrial Area, Bangalore-560058
-  080 28366713 / 080 28365615 / 080 28363655
-  +91 9845048490
-  [info@synchronmachinetools.in](mailto:info@synchronmachinetools.in)
-  [design@synchronmachinetools.in](mailto:design@synchronmachinetools.in)
-  [rohanrao@synchronmachinetools.in](mailto:rohanrao@synchronmachinetools.in)
-  [www.synchronmachinetools.in](http://www.synchronmachinetools.in)

